

Nene Ports Authority, Harbour Office, The Boathouse,
Harbour Square, Wisbech, Cambridgeshire, PE13 3BH
Tel +44(0) 1945 588059, Fax +44(0) 1945 580589

**IN AN EMERGENCY
CONTACT THE COAST GUARD 999**

LIMIT OF WISBECH PORT AUTHORITY

WISBECH & SUTTON
BRIDGE PILOT STATION
52°53.849N
000°15.509E

NENE ROADS SWM Mo(A)6s

Passage Information for Small Craft

Owners/Skippers of small craft intending to visit Wisbech are advised to make prior contact with the Harbour Office on +44(0) 1945 588059. A chartlet of the buoyed approach channel can be obtained by calling the above number.

Times of High Water at Wisbech are approximately +30 minutes on Wisbech Cut. Slack water at Wisbech can, however, vary according to local conditions but is approximately +1 hour 30 minutes on Wisbech Cut.

Cross Keys Swing Bridge has a estimated air draft of 3.40m at MHWS. The bridge will open 3 hours +/- HW. To avoid delays Mariners requiring the bridge to open should give 24 hrs notice if possible, but a minimum of 6 hrs will be required. "Small Craft which require a bridge opening should liaise directly with the Swing bridge duty officer Telephone + 44 (0) 1406 350 364, Mobile 07788931616 or Call Sign "Swing Bridge VHF Ch. 09". Updated ETA's are essential especially if the passage is delayed or abandoned. The bridge openings are controlled by marine traffic lights and should be abided by at all times. During Wisbech ship movement's, small vessels may be required to coincide their transit with commercial approach.

A waiting pontoon for small craft is situated adjacent to the West bank, approximately 500 metres North of Cross Keys Swing Bridge (see chartlet). This is for short term mooring only; allowing craft to make best use of tide when departing seawards and for holding inbound craft, prior to a bridge swing. Vessels should not raft more than two deep nor use the facility for any other purpose except with the prior permission of the Harbour Office. There is no shoreward access from this platform.

Monitor VHF Ch. 09 at all times and be aware of commercial ship movements.

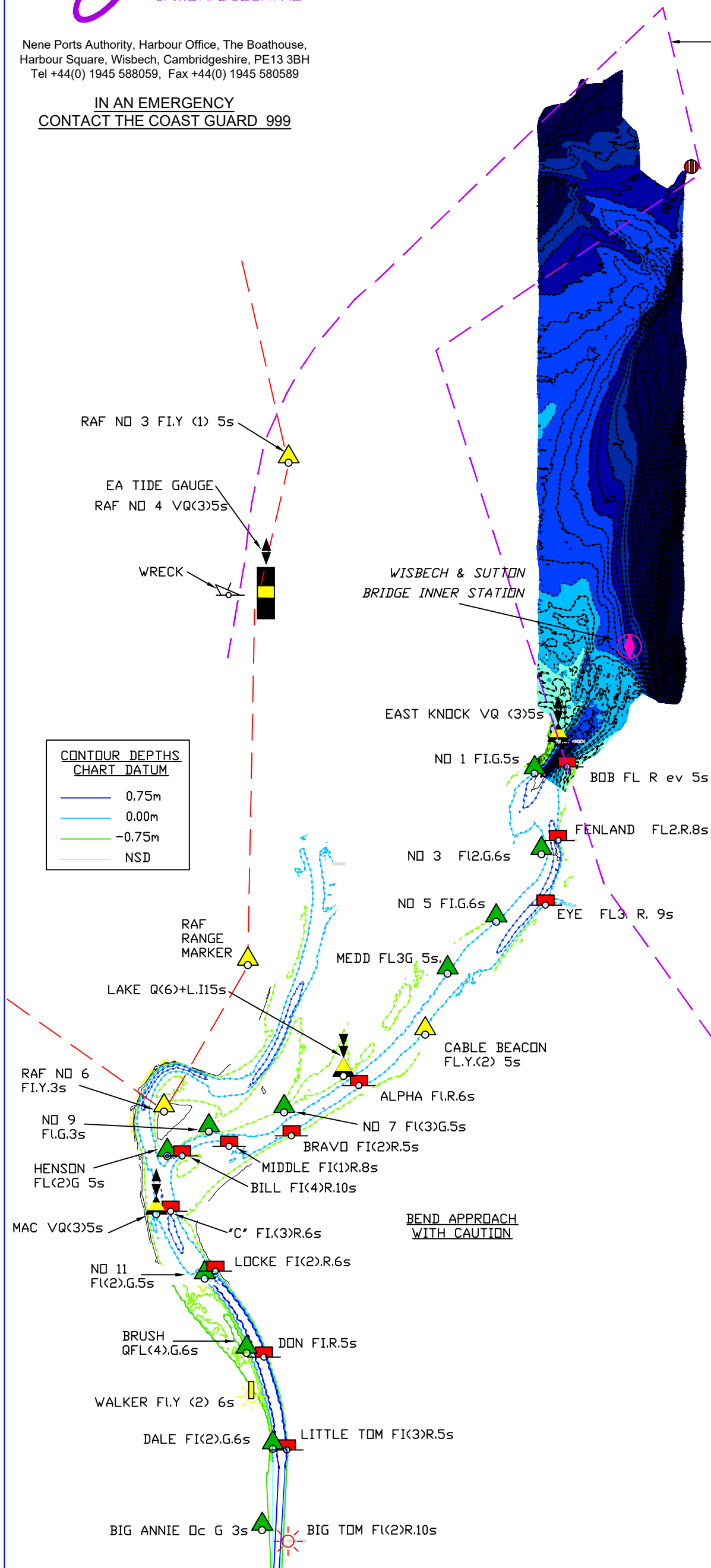
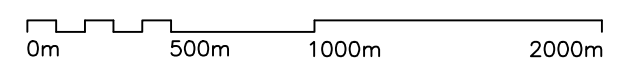
In the event of any pilot being unable to complete his duty the Master is advised to call Wisbech/Sutton Bridge Pilots immediately and report the situation. If the pilot cutter is off station and no other piloted vessel is available call Port Sutton Bridge office or Swing Bridge (VHF ch. 9) and report the situation. In the event of no local radio station being available call Humber Coastguard on VHF Ch. 06 and instigate the Port Emergency Plan.

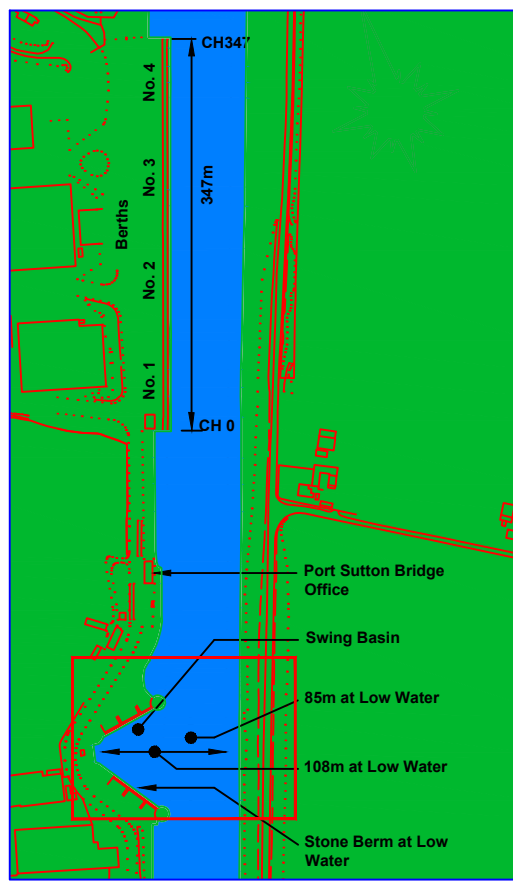
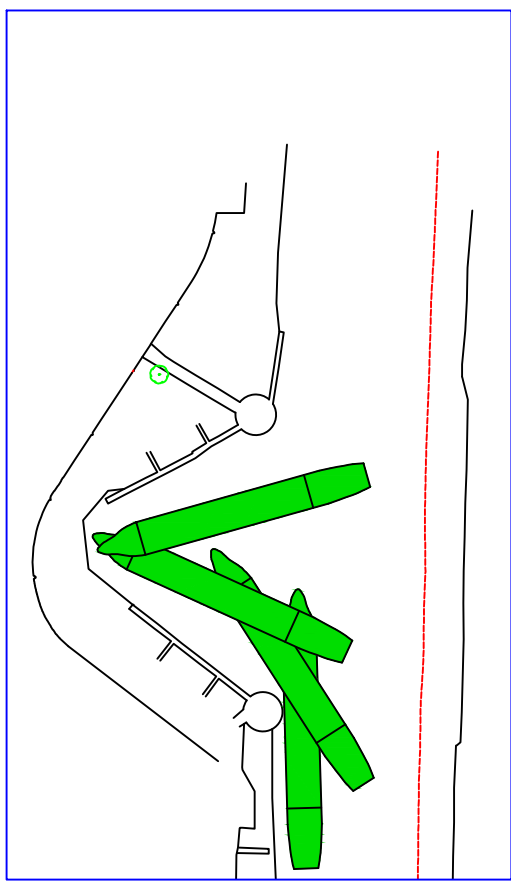
The number for the Port Duty Officer is 07860 576685. This plan shows all major marks, reporting points and advice to the Master to enable him to continue the passage.

This plan is intended for safe guideline purposes only and any limits given may be subject to alteration due to weather conditions, other vessel movements or any circumstance that may occur outside the control of the Harbour Authority.

NOTE:
Buoys & Beacons may be moved without notice to conform to the frequent changes in channel location and depth.

SCALE 1:25000





Pilotage

Admiralty Charts Nos. 108 and 1200. Imray Y9.

Pilotage is compulsory and Pilots should be ordered by shipping agents through the:-

Pilot Master, telephone +44 (0)7793 960094 or
 Port Sutton Bridge Ltd telephone +44 (0)1406 455405 or
 Port of Wisbech Ltd telephone +44 (0)1945 587070.

Masters are advised to give E.T.A. 24 hours prior to arrival at Pilot Station.
 Anchorage north of NENE ROADS SAFE WATER MARK approx. 220deg. True, 5.8
 nm from ROARING MIDDLE LIGHT FLOAT (52°54.28 N, 00°15.135, E)

The Pilot Vessel does not cruise on station except when vessels are expected. Pilots
 will make contact with vessels approx. 2½ hours to high water on VHF Channel 9.

In heavy weather or during busy periods boarding may be impossible at the Pilot
 Station, in which case Pilots will advise Masters by VHF how to proceed to facilitate
 boarding.

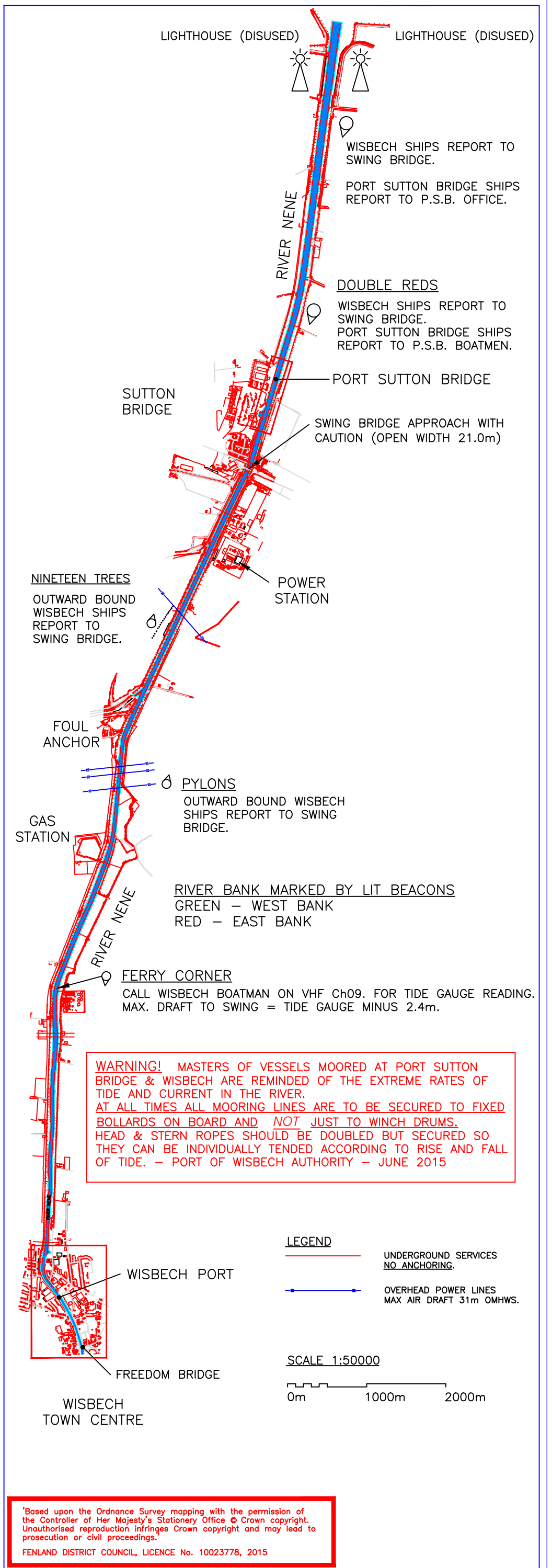
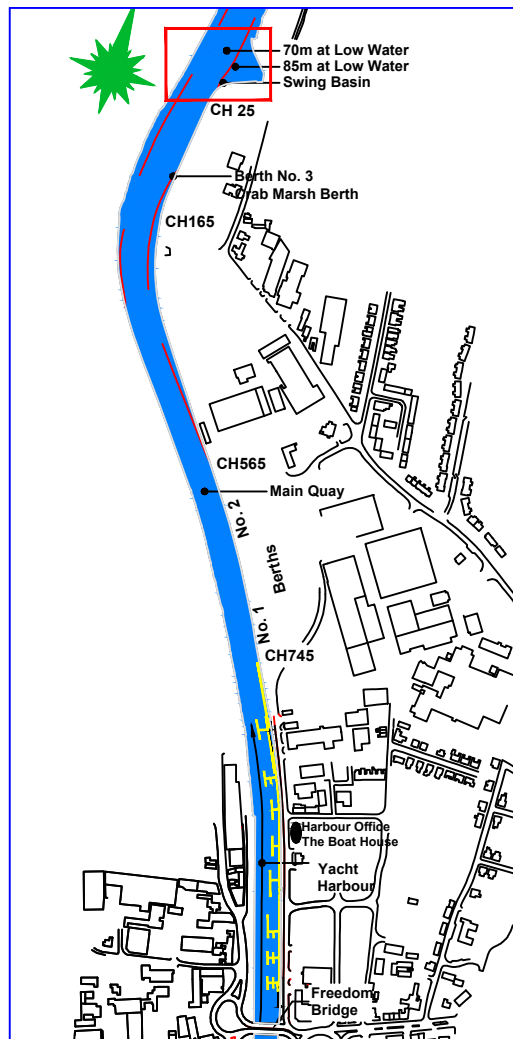
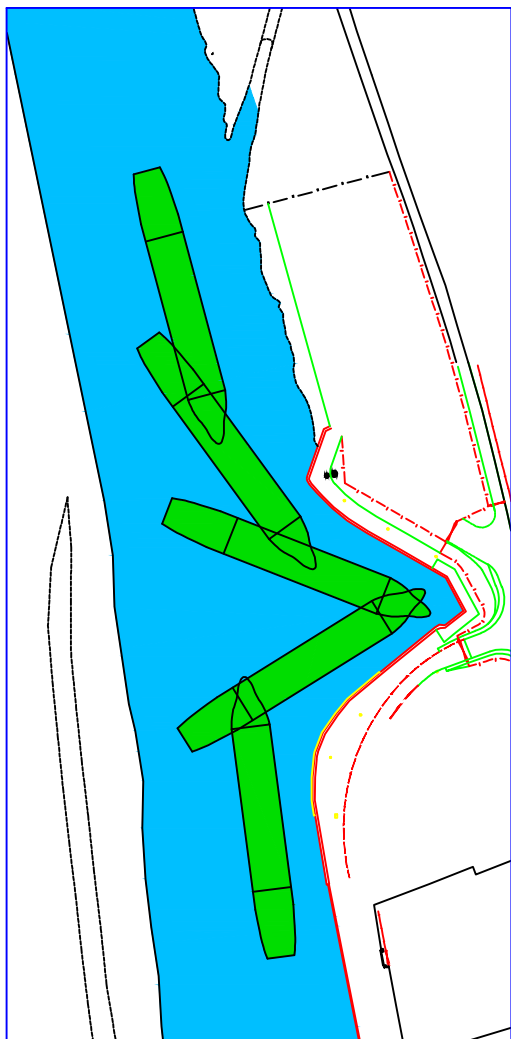
Pilot Master - Tel: +44(0) 7793 960094

Authorised Pilots:

G. Lewis - Tel: +44 (0) 7958 182526
 T. Covil - Tel: +44 (0) 7801 295091
 K Purser - Tel : +44 (0) 7474 486174

Rates ruling on application to Harbour Master.

Port Control working channel VHF Ch. 09 - Call signs
 'Wisbech Pilots', 'Sutton Bridge Pilots', 'Wisbech Harbour Office'.



WARNING! MASTERS OF VESSELS MOORED AT PORT SUTTON BRIDGE & WISBECH ARE REMINDED OF THE EXTREME RATES OF TIDE AND CURRENT IN THE RIVER. AT ALL TIMES ALL MOORING LINES ARE TO BE SECURED TO FIXED BOLLARDS ON BOARD AND NOT JUST TO WINCH DRUMS. HEAD & STERN ROPES SHOULD BE DOUBLED BUT SECURED SO THEY CAN BE INDIVIDUALLY TENDED ACCORDING TO RISE AND FALL OF TIDE. - PORT OF WISBECH AUTHORITY - JUNE 2015

'Based upon the Ordnance Survey mapping with the permission of the Controller of Her Majesty's Stationery Office © Crown copyright. Unauthorised reproduction infringes Crown copyright and may lead to prosecution or civil proceedings.
 FENLAND DISTRICT COUNCIL, LICENCE No. 10023778, 2015