

The  
Ecology Consultancy



# East Wisbech Urban Extension

## Arboricultural Survey

### Report for Fenland District Council

<b>Job Number</b>	6062			
<b>Author</b>	Mark Cannon BA (Hons) DipLA MArborA			
<b>Version</b>	<b>Checked by</b>	<b>Approved by</b>	<b>Date</b>	<b>Type</b>
V1.0	Dr Rachel Saunders BSc MCIEEM	David Coote MPhys MSc	25/10/17	FINAL

# Contents

Executive Summary	1
1 Introduction	3
2 Methodology	5
3 Results	7
4 Recommendations	16
References	17
Appendix 1: Schedule of Trees	18
Appendix 2: Tree Constraints Plans	48
Appendix 3: Glossary of Terms	52
Appendix 4: Photographs	55

## LIABILITY

The Ecology Consultancy has prepared this report for the sole use of the commissioning party in accordance with the agreement under which our services were performed. No warranty, express or implied, is made as to the advice in this report or any other service provided by us. This report may not be relied upon by any other party without the prior written permission of The Ecology Consultancy. The content of this report is, at least in part, based upon information provided by others and on the assumption that all relevant information has been provided by those parties from whom it has been requested. Information obtained from any third party has not been independently verified by The Ecology Consultancy, unless otherwise stated in the report.

## COPYRIGHT

© This report is the copyright of The Ecology Consultancy. Any unauthorised reproduction or usage by any person is prohibited. The Ecology Consultancy, part of the Temple Group Management Limited, is the trading name of Ecology Consultancy Ltd.

---

# Executive Summary

The Ecology Consultancy was commissioned by Fenland District Council to undertake a ground level survey of trees that could be affected by future works associated with the East Wisbech Urban Extension project. A qualitative assessment of each tree was carried out according to British Standard BS 5837:2012, *Trees in Relation to Design, Demolition and Construction– Recommendations*, focusing on arboricultural values (categories A1, B1, C1)<sup>1</sup> and landscape values (categories A2, B2, C3)<sup>2</sup>.

The main findings of the survey are as follows:

- There were 298 individual live trees, three dead trees, 66 tree groups<sup>3</sup>, ten orchard blocks and four woodland stands in and adjacent to the proposed development site each described in Appendix 1 of this report.
- A total of 13 individuals and 5 groups were attributed Category A status, 98 individuals and 18 groups were attributed Category B status, 187 individuals and 43 groups were attributed Category C status and 3 individuals were attributed Category U status.
- In addition to the individual trees and tree groups situated on the site, several other noteworthy arboricultural features were also identified. These included four blocks of woodland (W), ten regimented blocks of commercial orchard plantation (O) and four areas of dense scrubland (S) containing inaccessible scattered trees.
- Of the woodland blocks surveyed, one was attributed Category A status, two were attributed Category B status and one was attributed Category C status.
- A total of four areas of dense, inaccessible scrubland, designated S1 to S4, were surveyed. It was noted that while these areas of scrubland contained scattered trees, they were practically inaccessible to the general public and as such, any trees contained within them were of limited visual public amenity value. As such, it has been assumed that any trees located inside these areas would be attributed Category C status.

---

<sup>1</sup> Categorisation grading in accordance with BS 5837 2012. Trees suitable for retention: - Category A. Trees of high quality with an estimated remaining life expectancy of at least 40 years.  
Category B. Trees of moderate quality with an estimated life expectancy of at least 20 years.  
Category C. Trees of low quality with an estimated remaining life expectancy of at least 10 years or young trees with a stem diameter below 150mm.  
Category U. Trees of very low quality normally with a life expectancy of less than 10 years or requiring immediate removal due to health and safety concerns.

<sup>2</sup> British Standard BS 5837 2012 recommends that these categories may be further broken down into sub categories A1 A2 A3 pertaining to Arboricultural, Landscape or Cultural values respectively.

<sup>3</sup> The term “group” is intended to identify trees that form cohesive arboricultural features either aerodynamically (e.g. trees that provide companion shelter), visually (e.g. avenues or screens) or culturally, including for biodiversity (e.g. parkland or wood pasture).

- A total of ten blocks of commercial apple orchard ranging between 2m and 3m in height designated O1 to O10 were surveyed. The blocks varied in size, the largest being 3.61ha in extent and the smallest reaching 0.31ha in extent. Due to their private commercial setting and homogenous planting, they were not considered to be of significant amenity or landscape significance.
- Root protection areas were calculated in accordance with BS 5837:2012 for each of the surveyed trees, and ranged from 1.13m<sup>2</sup> to 706.86m<sup>2</sup> for T89 and T39 respectively.
- Any work to trees should consider the potential presence of protected species, including breeding birds and roosting bats. The Preliminary Ecological Appraisal report (The Ecology Consultancy, 2017) should be consulted.

# 1 Introduction

## BACKGROUND

- 1.1 The Ecology Consultancy was commissioned on 30 June 2017 by Fenland District Council to carry out an arboricultural survey of trees situated on land directly to the east of Wisbech, Cambridgeshire and provide a report to inform future design proposals and tree protection. The survey is required to assess the condition of trees that could be affected by future development of the site, and provide sufficient information for the development of site layouts and construction exclusion zones to enable the protection of existing trees.

## SCOPE OF REPORT

- 1.2 This report has been produced in accordance with British Standard BS 5837:2012 Trees in Relation to Design, Demolition and Construction – Recommendations (hereby referred to as BS 5837:2012). It provides information on the current condition of trees at the site, their suitability for retention, and the above and below ground constraints to development.
- 1.3 Any clear flaws or hazards have been identified in the Schedule of Trees provided in Appendix 1. Preliminary recommendations for the management of retained trees are provided, but a full hazard risk assessment comprising a more comprehensive analysis of tree condition and potential risk to target areas is beyond the scope of this report. Any recommendations relating to the management of potentially hazardous trees should be carried out as soon as possible<sup>4</sup>.

## SITE CONTEXT AND STATUS

- 1.4 The site falls within two administrative boundaries, Fenland District Council to the east and the Borough Council of King's Lynn and West Norfolk to the west. The site is mostly flat and currently comprises a mixture of commercial orchard, arable farming, informal

---

<sup>4</sup> All tree works should be undertaken by a suitably qualified Arboricultural Contractor. No arboricultural works to trees subject to planning constraints shall be carried out without the written consent of the relevant Local Planning Authority (LPA). Any proposed tree works should be undertaken in accordance with British Standard BS 3998:2010 Treework - Recommendations. Works to trees that are the subject of a Tree Preservation Order or within a Conservation Area which are deemed to be dangerous under Regulation 14 of the Town and Country Planning (England) (Regulations) 2012 may under certain circumstances be undertaken without needing to seek the prior written consent of the LPA.

open space and mature woodland, measuring 73ha in extent. The Ordnance Survey National Grid reference for the centre of the site is TF 47786 09548.

### **DESCRIPTION OF THE PROPOSALS**

- 1.5 It is understood that the proposals for the site will be centred mainly around residential development (some 1,450 dwellings in total) but is to also include a primary school, local centre and a number of community open spaces.

## 2 Methodology

### TREE SURVEY

- 2.1 The tree survey was conducted in accordance with BS 5837:2012 the results of which are presented in the Schedule of Trees (Appendix 1) and include a sequential numbering of each tree, species listed by common name; tree dimensions including overall height, canopy spreads measured against the cardinal compass points; crown height; age class; physiological condition; structural condition, life expectancy; root protection areas and preliminary management advice.
- 2.2 Each tree has been assigned a category grade in accordance with BS 5837:2012 categories A, B, C and U ranging from high to low quality. Definitions of tree quality are provided in Table 3, Appendix 1.
- 2.3 For the purposes of this report, arboricultural as well as landscape sub-categories have been used in the Schedule of Trees. BS 5837:2012 points out that each sub-category should be given equal weighting when grading trees against these criteria.
- 2.4 A tree constraints plan is presented in Appendix 2 showing the recommended root protection areas (RPA) for all surveyed trees, and highlighting each grading category using the colour key system as described in BS 5837:2012.
- 2.5 A red line ordnance survey boundary map of the East Wisbech Urban Extension area was provided for the purposes of compiling this report.
- 2.6 The site was visited on 2, 3, 9 and 10 August 2017, weather conditions were dry and sunny. All trees likely to be affected by works inside the red line boundary of the site were visually assessed using the Visual Tree Assessment Method (VTA) (Mattheck and Beloer, 1994)
- 2.7 Canopy spreads and stem diameters were measured using diameter tape or estimated by pacing. Height measurements were taken using a laser clinometer. All other tree dimensions were estimated unless specifically indicated otherwise.
- 2.8 Tree locations were plotted onto a dwg/ cad format ordnance survey base plan using a sub metre GPS system.
- 2.9 No soil samples or soil analysis were undertaken.



## PERSONNEL

- 2.10 The tree survey was carried out by Mark Cannon BA (Hons) Dip. LA Tech Cert (ArborA) MArborA, and James Potts BSC (Hons) MArborA
- 2.11 Mark is an arboriculturalist with over 20 years' experience in the arboricultural and built environment sectors. Mark has experience in providing professional expert arboricultural advice and recommendations in relation to trees and development.
- 2.12 James is an arboriculturalist with over 4 years' experience in the arboricultural sector, working in both private consultancy and arboricultural contracting. He is generally responsible for report production and client liaison.

## LIMITATIONS

- 2.13 Only preliminary recommendations for tree management are provided. A full hazard risk assessment comprising a more comprehensive analysis of the condition and potential risk to target areas is beyond the scope of this report.
- 2.14 One or more trees surveyed were ivy-clad, inhibiting standard VTA inspection methods and stem measurements. As such, assumptions have been made relating to the condition and size of ivy-clad trees. Management recommendations for ivy-clad trees have been made in this report and should be followed to remove any risk that may be posed by them.
- 2.15 The trees were inspected at ground level and no decay detection equipment was used.
- 2.16 One or more trees were situated in areas where access to the main stem was not possible. As such, assumptions have been made relating to their stem condition and dimensions.

## 3 Results

### TREE SURVEY

- 3.1 The results of the tree survey are provided in the Schedule of Trees in Appendix 1. A Tree Constraints Plan illustrating the BS 5837:2012 categories of each tree, their crown spread and RPA is presented in Appendix 2 and photographs of the site are provided in Appendix 4.
- 3.2 Tree constraints checks were undertaken with the Borough Council of Kings Lynn and West Norfolk, as well as Fenland District Council and it was confirmed that no surveyed trees as described in Appendix 1 were subject to Tree Preservation Order or Conservation Area restrictions.
- 3.3 The survey recorded 298 individual live trees, three dead trees, 66 tree groups<sup>5</sup>, ten orchard blocks and four woodland stands which could potentially be affected by future development.
- 3.4 Species present comprised: black poplar *Populus nigra*, blue atlas cedar *Cedrus atlantica*, box elder *Acer negundo*, cherry plum *Prunus cerasifera*, common alder *Alnus glutinosa*, common ash *Fraxinus excelsior*, common blackthorn *Prunus spinosa*, common hawthorn *Crataegus monogyna*, common horse chestnut *Aesculus hippocastanum*, common lime *Tilia x europaea*, common plum *Prunus domestica*, common walnut *Juglans regia*, corkscrew willow *Salix babylonica* ‘Tortuosa’, crack willow *Salix fragilis*, dawn redwood *Metasequoia glyptostroboides*, deodar cedar *Cedrus deodara*, domestic apple *Malus domestica*, douglas fir *Pseudotsuga meneziseii*, Blue gum *Eucalyptus globulus*, European beech *Fagus sylvatica*, European weeping beech *Fagus sylvatica* ‘Pendula’, European black pine *Pinus nigra*, European rowan *Sorbus aucuparia*, false acacia *Robinia pseudoacacia*, field maple *Acer campestre*, goat willow *Salix caprea*, hinoki cypress *Chamaecyparis obtusa*, Indian bean tree *Catalpa bignonioides*, Lawson cypress *Chamaecyparis lawsoniana*, Lombardy poplar *Populus nigra* ‘Italica’, Norway maple *Acer platanoides*, Norway spruce *Picea abies*, ornamental spruce *Picea spp*, pedunculate oak *Quercus robur*, purple leaf birch *Betula pendula* ‘Purpurea’, red oak *Quercus rubra*, silver birch *Betula pendula*, sweet chestnut

---

<sup>5</sup> The term “group” is intended to identify trees that form cohesive arboricultural features either aerodynamically (e.g. trees that provide companion shelter), visually (e.g. avenues or screens) or culturally, including for biodiversity (e.g. parkland or wood pasture).

*Castanea sativa*, sycamore *Acer pseudoplatanus*, Torbay palm *Cordaline australis*, weeping willow *Salix babylonica* 'Pendula' and wild cherry *Prunus avium*.

3.5 The numbers of each species are provided in Table 1 below.

**Table 1:** Species key and site frequency for individual trees potentially affected by development

Tree Species	Frequency
Black poplar	3
Blue Atlas	1
Box elder	2
Cherry plum	7
Common alder	26
Common ash	48
Common blackthorn	13
Common hawthorn	34
Common horse chestnut	3
Common lime	5
Common plum	10
Common walnut	3
Corkscrew willow	2
Crack willow	3
Dawn redwood	1
Deodar cedar	1
Domestic apple	10
Douglas fir	1
Eucalyptus sp	15
European beech	3
European black pine	4
European rowan	1
False acacia	1

**Table 1:** Species key and site frequency for individual trees potentially affected by development

Tree Species	Frequency
Field maple	2
Goat willow	6
Hinoki cypress	1
Indian bean tree	4
Lawson's Cypress	18
Lombardy poplar	9
Norway maple	5
Norway spruce	1
Ornamental spruce	2
Pedunculate oak	15
Purple leaf birch	1
Red oak	1
Silver birch	17
Sweet chestnut	1
Sycamore	10
Torbay palm	1
Weeping willow	3
Wild cherry	4

3.6 The physiological and structural condition<sup>6</sup> of the majority of the trees, tree groups and woodland blocks surveyed was consistent with Category C status with a total of 43 groups and 187 individual trees being attributed this grade. A total of 18 groups and 98 individual trees were attributed Category B status, while a further five groups, 13 individual trees were attributed Category A status. Only three individual trees were attributed Category U status.

<sup>6</sup> Physiological and structural condition are terms used to differentiate between a trees physiological condition i.e. annual growth, vigour, presence of disease etc. as opposed to structural condition relating to branch formation, mechanical strength and integrity.

3.7 Of the individual trees and tree groups surveyed, a total of 42 were classified to be at a Young life stage<sup>7</sup>, 110 were classified as Semi-mature, 108 were classified as Early-mature, 99 were classified as Mature and five were classified as Over-mature.

3.8 A summary of the number of trees surveyed corresponding to BS 5837:2012 tree quality assessment definitions is provided below in Table 2 below. Trees found to be dead are denoted with the letter 'D'.

**Table 2: Grade Classifications**

BS 5837:2012 Grades A to U	Trees attributed to each grade	Frequency
A	T10, T11, T34, T36, T119, T129, T130, T144, T149, T161, T190, T256, T282, G2, G3, G4, G6, G67	18
B	T1, T14, T15, T27, T28, T29, T30, T32, T33, T35, T37, T38, T39, T40, T41, T43, T44, T47, T48, T58, T59, T73, T74, T75, T76, T77, T78, T79, T83, T90, T108, T112, T114, T115, T120, T124, T125, T131, T133, T134, T135, T136, T137, T138, T140, T142, T145, T147, T148, T153, T154, T156, T159, T160, T162, T164, T166, T167, T170, T172, T174, T175, T176, T178, T179, T180, T182, T184, T185, T186, T187, T188, T189, T191, T193, T198, T199, T202, T203, T208, T209, T214, T215, T225, T270, T275, T279, T281, T283, T284, T285, T286, T287, T289, T290, T291, T293, T296, G5, G8, G10, G11, G15, G16, G17, G20, G24, G34, G35, G45, G46, G49, G50, G56, G57, G61	116
C	T2, T3, T4, T5, T6, T7, T8, T9, T12, T13, T16, T17, T18, T19, T20, T21, T22, T23, T24, T25, T26, T31, T42, T45, T46, T49, T50, T51, T52, T53, T54, T55, T56, T57, T60, T61, T62, T63, T64, T65, T66, T67, T68, T69, T70, T71, T72, T80, T81, T82, T84, T85, T86, T87, T88, T91, T92, T93, T94, T95, T96, T97, T98, T99, T101, T102, T103, T104, T105, T106, T107, T109, T110, T111, T113, T116, T117, T118, T121, T122, T123, T126, T127, T128, T132, T139, T141, T143, T146, T150, T151, T152, T155, T157, T163, T165, T168, T169, T171, T173, T177, T181, T183, T192, T194, T195, T196, T197, T200, T201, T204, T206, T207, T208, T208, T210, T211, T212, T216, T217, T218, T219, T220, T221, T222, T226, T227,	230

<sup>7</sup> Young. Establishing; usually with good vigour, but as of limited significance within the landscape.  
 Semi-mature. Established; normally vigorous and increasing in height. Of increasing landscape significance.  
 Early-mature. Fully established trees around the middle half of their life span retaining good vigour. Not yet achieved full height and retaining apical dominance.  
 Mature. Fully established trees retaining moderate vigour. Apical dominance lost but crown still spreading.  
 Over-mature. Fully mature trees in the last quarter of their usual life expectancy; vigour declining.

**Table 2: Grade Classifications**

BS 5837:2012 Grades A to U	Trees attributed to each grade	Frequency
	T228, T229, T230, T231, T232, T233, T234, T235, T236, T237, T238, T239, T240, T241, T242, T243, T244, T245, T246, T247, T248, T249, T250, T251, T252, T253, T254, T255, T257, T258, T259, T260, T261, T262, T263, T264, T265, T266, T267, T268, T269, T271, T272, T273, T274, T276, T277, T278, T280, T288, T292, T294, T295, T297, T298, T299, T300, D1, D2, D3, G1, G7, G9, G12, G13, G14, G18, G19, G21, G22, G23, G25, G26, G27, G28, G29, G30, G31, G32, G33, G36, G40, G41, G42, G43, G44, G47, G48, G51, G52, G53, G54, G55, G58, G59, G60, G62, G63, G64, G65, G66, G68, G69	
U	T89, T100, T158	3

3.9 All Category A and B trees and tree groups listed in Table 2 should be given priority consideration for retention during any future development which should take full account of above and below ground constraints, as shown on the Tree Constraints Plan (Appendix 1).

3.10 A summary of the condition and value of the most noteworthy trees is provided below, based on information presented in Appendix 1.

- Crack willow T10 was situated near the southwest corner of the site on the western edge of woodland block W4. The tree was mature, 18m in height, had two main stems and a maximum canopy radius extending 6m in all directions. The tree appeared in fair structural and physiological condition requiring no immediate remedial works.
- Black poplar T11 was situated on the northwest corner of woodland block W4, 46m north of T10. The tree was mature, 20m in height, had a single stem and a maximum canopy radius extending to 10m to the south. The tree appeared in fair structural and good physiological condition requiring no immediate remedial works.
- Common walnut T34 was situated on a strip of private land extending between Meadowgate Lane to the East and Green Lane to the west, 250m north of the sites southern boundary, 245m east of Meadowgate Lane. The tree was mature, 15m in height, had a single stem and a maximum canopy radius extending 8m in

all directions. The tree appeared in fair structural and good physiological condition, requiring no immediate remedial works.

- Goat willow T36 was situated directly north of the northeast corner of Meadowgate academy on the southern side of the dry ditch extending between Meadowgate Lane and Green Lane. The tree was over-mature, 8m in height and had multiple stems extending from its original stem which had collapsed and layered into the northern side of the dry ditch. Despite its poor structural condition, the tree poses little risk to the public due to its difficult to access location.
- Silver Birch T119 was situated in a large private garden consisting of numerous, scattered specimen trees, located 65m north of Sandy Lane and 40m east of Stow Road. The tree was early-mature, 17m in height, had a single stem and a maximum canopy radius extending 3m to the east. The tree appeared in good structural and physiological condition requiring no immediate remedial works.
- Dawn redwood T129 was situated in the same private garden as T119, 27m north of its southern boundary hedge and 145m east of Stow Road. The tree was early-mature, 14.5m in height, had a single stem and a maximum canopy radius extending 3m in all directions. The tree appeared in good structural and physiological condition, requiring no immediate remedial works.
- Weeping willow T130 was situated 22.5m east of T129 and 20m north of the private garden's southern boundary hedge. The tree was mature, 8.5m in height, had a single stem and a maximum canopy radius extending 5m in all directions. The tree appeared in good structural and physiological condition requiring no immediate remedial works.
- Silver Birch T144 was situated 15m north of T129. The tree was early-mature, 15m in height, had a single stem and a maximum canopy radius extending 3m in all directions. The tree appeared in good structural and good physiological condition, requiring no immediate remedial works.
- Blue gum T149 was situated near to the eastern boundary of the same private garden, 35m north of its south-east corner. The tree was mature, 23.5m in height, had a single stem and a maximum canopy radius extending 3m in all directions. The tree appeared in good structural and physiological condition requiring no immediate remedial works.
- Weeping willow T161 was situated near the private garden's northern boundary, 120m east of Stow road and 50m northwest of T129. The tree was mature, 13.5m in height, had a single stem and a maximum canopy spread extending 5m to the

south, east and west. The tree appeared in good structural and physiological condition and required no immediate remedial works.

- Lombardy poplar T190 was situated on the eastern edge of the private garden, 20m north of T149. The tree was mature, 24m in height, had a single stem and a maximum canopy radius extending 2.5m in all directions. The tree appeared to be in good structural and physiological condition requiring no immediate works.
- Black poplar T256 was situated 130m south of the site's northern boundary, midway between Stow Road and Burrettgate Road, directly north of orchard O5. The tree was mature, 23m in height, had five stems and a maximum canopy radius extending 7m to the south and east. The tree was ivy-clad, inhibiting inspection of its stem and lower canopy; however, it appeared in fair structural and physiological condition.
- Common walnut T282 was situated adjacent to the northeast corner of orchard O8 and the western edge of orchard O5, on the eastern side of the drainage ditch running between them. The tree was early-mature, 12m in height, had five stems and a maximum canopy radius extending 5m in all directions. The tree appeared in good structural and physiological condition, requiring no immediate remedial works.
- Group G67 was situated inside a private rear garden in Stow Road marking the southern boundary between the property and commercial orchard to the south. The group comprised a line of mature Lombardy poplar, 29m in height and maximum canopy radius extending 3m in all directions. The trees were generally in fair structural and good physiological condition, making a significant contribution to the local landscape and visual public amenity.

3.11 In addition to the individual trees and tree groups situated on the site, several other noteworthy arboricultural features were also identified. These included four blocks of woodland (W), ten regimented blocks of commercial orchard plantation (O) and four areas of dense scrubland (S) containing inaccessible scattered trees.

3.12 Of the woodland blocks surveyed, one was attributed Category A status, two were attributed Category B status and one was attributed Category C status.

- Woodland block W1 was situated directly south of Sandy Lane and 220m west of its junction with Broadend Road. The block extended 120m south of Sandy Lane and measured 0.3ha in extent. The block consisted mainly of Norway spruce and silver birch and appeared to be in fair structural and physiological condition,



requiring no immediate remedial works. The block was attributed Category C status for its relatively small size, moderate quality and low public accessibility, affording it low visual public amenity.

- Woodland block W2 was situated in the centre of the site, directly south of Sandy Lane and directly east of W1. The woodland block extended 140m south of Sandy Lane and measured approximately 0.5ha in extent. The block consisted mainly of Norway spruce and silver birch. It appeared to be in fair structural and physiological condition and, as with W1, was attributed Category B status for its relatively small size, moderate quality and low public accessibility, affording it low visual public amenity.
- Woodland block W3 was situated directly adjacent to the site's south-east corner and extended 145m to the west and 96m to the north, measuring 1.3ha in total. The block consisted of a mixture of crack willow, goat willow, hawthorn and plum in its eastern extents, with young stands of alder and ash to the west and scattered domestic apple trees to the south. In general the block appeared in fair structural and physiological condition and required some clearing of paths and thinning out in order to make it more accessible and enjoyable for the public. For this reason, the woodland block was only attributed Category B status for its value as a landscape feature.
- Woodland block W4 was situated adjacent to the site's southern boundary, directly west of W3 and measured 2.7ha in extent. The block consisted mainly of mature black poplar with an understory comprising field maple, common ash, pedunculate oak, common hawthorn and common alder. In general, the stand appeared to be in fair structural and good physiological condition and contained a number of footpaths and rides for public access. The woodland block was attributed Category A status for its large size, moderate quality and good public accessibility, affording it high landscape and local visual amenity value.

3.13 The site contained a total of four areas of dense, inaccessible scrubland, designated S1 to S4 as displayed in Appendix 2. It was noted that while these areas of scrubland contained scattered trees, they were practically inaccessible to the general public and, as such, any trees contained within them were of limited visual public amenity value. As such, it has been assumed that any trees located inside these areas would be attributed Category C status.

3.14 The also site contained a total of ten blocks of commercial apple orchard ranging between 2m and 3m in height designated O1 to O10 as displayed in Appendix 2. The

blocks varied in size, the largest being 3.61ha in extent and the smallest reaching 0.31ha in extent. Due to their private commercial nature and homogenous planting, they were not considered to be of significant amenity or landscape significance.

## 4 Recommendations

### TREE WORKS

- 4.1 Although not specifically required for the purposes of evaluating design proposals and layouts, preliminary recommendations for tree management are provided below.
- Further evaluation and a full hazard risk assessment of 46, 47, 88, 89, 99, 100, 105, 120, 126, 148, 150, 151, 152, 157, 158, 179, 229, 231, 235, 268 and 296 should be undertaken, to establish the extent of decay, weakness or defects present, if it is progressive, and whether immediate intervention such as canopy reduction or removal are necessary.
  - Trees D1, D2 and D3 as described on the tree constraints plan (Appendix 2) should be assessed and considered for removal.
  - All major dead wood and broken branches should be removed from trees where they may pose a health and safety risk.
  - All ivy-clad trees for which inspection was inhibited should have the ivy cleared and be re-inspected by a trained and competent arboriculturalist.
- 4.2 All tree works and ivy removal should give due consideration to the potential presence of protected species, including breeding birds and roosting bats. The Preliminary Ecological Assessment report (The Ecology Consultancy, 2017) should be consulted.
- 4.3 Arisings from tree works (e.g. wood piles and standing dead trunks) can provide valuable habitats for wildlife. As such, consideration should be given to their retention on site in areas unlikely to cause issues to public health and safety.
- 4.4 It is recommended that building and road footprints are carefully planned to generally avoid excessive tree surgery as well as disturbance to root protection areas and to ensure that there is sufficient space between the canopy and the building line to allow construction buffers, scaffolding, future building maintenance and access ensuring a satisfactory spatial quality.
- 4.5 All tree pruning should be carefully planned and undertaken in accordance with *BS 3998: 2010 Recommendation for Tree Works*.

4.6 Any recommendations highlighting the management of potentially hazardous trees should be reviewed as soon as is practically possible.

## References

British Standard Institute (BSI) (2010). *BS 3998:2010 Recommendation for Tree Works*. BSI, London.

British Standard Institute (BSI) (2012). *BS 5837:2012 Trees in Relation to Design Demolition and Construction-Recommendations*. BSI, London.

British Standard Institute (BSI) (2014). *BS 8545:2014 Trees: from nursery to independence in the landscape - Recommendations*. BSI, London.

Department for Communities and Local Government (2014). *Planning Practice Guidance on Tree Preservation Orders and trees in conservation areas*.

Lonsdale, D. (1999). *Research for Amenity Trees No.7: Principles of Tree Hazard Assessment and Management*. HMSO

Mattheck and Beloer (1994). HMSO London. Research for Amenity Trees No 4; *The Body Language of Trees*.

Town and Country Planning Act 1990 (as amended).

Town and Country Planning (Tree Preservation) (England) Regulations 2012.

## Appendix 1: Schedule of Trees

Table 1: Schedule of Trees and Tree Quality Assessment\*

No	Species	Ht.	S	St. 1.5m	Canopy Spread				Cr.Cl	Ls	SC	PC	Comments /Observation	Preliminary Management Advice	LE	RPA	RPA <sup>m2</sup>	Cat**
					N	S	E	W										
T1	Norway maple	14	4	350/ 350/ 310/ 290	6	6	5	7	2.5	EM	Fair	Fair	Ivy-clad, inhibiting inspection. Access to main stem restricted	Sever ivy and re-inspect	40+	192.4	7.8	B1
T2	Common hawthorn	6	1	200	1.5	1.5	1.5	1.5	0	SM	Fair	Fair	Access to main stem restricted	No immediate works required	40+	18.1	2.4	C1
T3	Common hawthorn	6	1	200	1.5	1.5	1.5	1.5	0	SM	Fair	Fair	-	No immediate works required	40+	18.1	2.4	C1
T4	Silver birch	12	1	250	2	2	2	2	1	SM	Fair	Fair	-	No immediate works required	40+	28.3	3.0	C1
T5	Silver birch	13	1	350	2.5	2.5	2.5	2.5	2	EM	Fair	Fair	Ivy-clad, inhibiting inspection		40+	55.4	4.2	C1
T6	Silver birch	12	1	250	2	2	2	2	1	SM	Fair	Fair	-	No immediate works required	40+	28.3	3.0	C1
T7	Silver birch	12	1	250	2	2	2	2	1	SM	Fair	Fair	-	No immediate works required	40+	28.3	3.0	C1
T8	Silver birch	12	1	280	2	2	2	2	1	SM	Fair	Fair	Ivy-clad, inhibiting inspection		40+	35.5	3.4	C1
T9	Common ash	8	1	150	1.5	1.5	1.5	1.5	1	Y	Fair	Fair	-	No immediate works required	40+	10.2	1.8	C1
T10	Crack willow	18	2	810/ 400	6	6	6	6	5	M	Fair	Fair	-	No immediate works required	40+	369.2	10.8	A1
T11	Black poplar	20	1	1200	8	10	5	8		M	Fair	Good	-	No immediate works required	40+	651.4	14.4	A1
T12	European rowan	3.5	1	70	1	1	1	1	1	Y	Fair	Fair	-	No immediate works required	40+	2.2	0.8	C1
T13	Crack willow	16	1	650	5	5	5	5	8	OM	Fair	Fair	Dead	Remove minor dead limbs overhanging path to south	0-10	191.1	7.8	C1
T14	Crack willow	12	7	250/ 300x6	6	6	6	6	1	M	Fair	Fair	-	No immediate works required	40+	271.6	9.3	B1
T15	Common ash	15	7	350	5.5	5.5	5.5	5.5	2	EM	Fair	Good	-	No immediate works required	40+	387.9	11.1	B1

Table 1: Schedule of Trees and Tree Quality Assessment\*

No	Species	Ht.	S	St. 1.5m	Canopy Spread				Cr.Cl	Ls	SC	PC	Comments /Observation	Preliminary Management Advice	LE	RPA	RPA <sup>m2</sup>	Cat**
					N	S	E	W										
T16	Common hawthorn	5	10	150	3	3	3	3	0	EM	Fair	Fair	-	No immediate works required	40+	101.8	5.7	C1
T17	Common blackthorn	9	1	200	2.5	2.5	2.5	2.5	2.5	M	Fair	Fair	-	No immediate works required	40+	18.1	2.4	C1
T18	Common hawthorn	7	1	250	3	3	3	3	0	SM	Fair	Good	-	No immediate works required	40+	28.3	3.0	C1
T19	Field maple	12	2	350/ 350	4.5	4.5	4.5	4.5	1	EM	Fair	Fair	-	No immediate works required	40+	110.8	5.9	C1
T20	Common hawthorn	7	1	250	3	3	3	3	0	SM	Fair	Good	Access restricted	No immediate works required	40+	28.3	3.0	C1
T21	Common hawthorn	7	1	250	3	3	3	3	0	SM	Fair	Good	-	No immediate works required	40+	28.3	3.0	C1
T22	Common hawthorn	7	1	250	3	3	3	3	0	SM	Fair	Good	-	No immediate works required	40+	28.3	3.0	C1
T23	Common hawthorn	7	1	250	3	3	3	3	0	SM	Fair	Good	-	No immediate works required	40+	28.3	3.0	C1
T24	Common hawthorn	5	1	250	2	2	2	2	0	Y	Fair	Fair	-	No immediate works required	40+	28.3	3.0	C1
T25	Common blackthorn	9	1	200	2.5	2.5	2.5	2.5	2.5	M	Fair	Fair	-	No immediate works required	40+	18.1	2.4	C1
T26	Common blackthorn	9	1	200	2.5	2.5	2.5	2.5	2.5	M	Fair	Fair	-	No immediate works required	40+	18.1	2.4	C1
T27	Common ash	16	4	450/ 450/ 390/ 350	7	7	7	7	7	M	Fair	Fair	-	No immediate works required	40+	307.4	9.9	B1
T28	Common ash	16	4	450/ 450/ 390/ 350	7	7	7	7	7	M	Fair	Fair	-	No immediate works required	40+	307.4	9.9	B1
T29	Common ash	16	4	450/ 450/ 390/ 350	7	7	7	7	7	M	Fair	Fair	-	No immediate works required	40+	307.4	9.9	B1
T30	Common hawthorn	5	5	200x5	5	5	5	5	0	SM	Fair	Fair	Blackthorn and hawthorn hedge extending along both the north and south of ditch	No immediate works required	40+	90.5	5.4	B2

Table 1: Schedule of Trees and Tree Quality Assessment\*

No	Species	Ht.	S	St. 1.5m	Canopy Spread				Cr.Cl	Ls	SC	PC	Comments /Observation	Preliminary Management Advice	LE	RPA	RPA <sup>m2</sup>	Cat**
					N	S	E	W										
T31	Common hawthorn	5	5	200x5	5	5	5	5	0	SM	Fair	Fair	-	No immediate works required	40+	90.5	5.4	C1
T32	Common walnut	10	1	400	3.5	3.5	3.5	3	0	EM	Fair	Fair	-	No immediate works required	40+	72.4	4.8	B1
T33	Common hawthorn	9	1	280	4	2	2	2	3	EM	Fair	Fair	Hawthorn hedge with ash standards to south of drainage ditch.	No immediate works required	40+	35.5	3.4	B2
T34	Common walnut	15	3	700/ 600/ 380	8	8	8	8	0.5	M	Fair	Good	-	No immediate works required	40+	449.9	12.0	A1
T35	Common ash	16	4	450/ 450/ 390/ 350	7	7	7	7	7	M	Fair	Fair	-	No immediate works required	40+	307.4	9.9	B1
T36	Goat willow	8	5	400/ 400/ 390/ 350/ 300	8	0	7	7	0	OM	Poor	Good	Collapsed to north, layered into bank	No immediate works required	40+	309.7	9.9	A1
T37	Common ash	16	4	450/ 450/ 390/ 350	7	7	7	7	7	M	Fair	Fair	-	No immediate works required	40+	307.4	9.9	B1
T38	Common ash	16	4	450/ 450/ 390/ 350	7	7	7	7	7	M	Fair	Fair	-	No immediate works required	40+	307.4	9.9	B1
T39	Goat willow	11	12	450/ 410/ 400x5/ 385/ 380/ 355/ 350/ 300	6	6	6	6	2	EM	Good	Good	-	No immediate works required	40+	808.2	16.0	B1
T40	Common ash	16	4	450/ 450/ 390/ 350	7	7	7	7	7	M	Fair	Fair	-	No immediate works required	40+	307.4	9.9	B1
T41	Common ash	15	2	320/ 280	8	4	4	4	6	EM	Fair	Fair	-	No immediate works required	40+	81.8	5.1	B2
T42	Common ash	6	3	150/ 150/ 90	8	0	2	3	2	SM	Fair	Fair	-	No immediate works required	40+	24.0	2.8	C1



Table 1: Schedule of Trees and Tree Quality Assessment\*

No	Species	Ht.	S	St. 1.5m	Canopy Spread				Cr.Cl	Ls	SC	PC	Comments /Observation	Preliminary Management Advice	LE	RPA	RPA <sup>m2</sup>	Cat**
					N	S	E	W										
T43	Common ash	15	5	380/ 300/ 290/ 250/ 250	6	6	6	6	6	M	Fair	Fair	-	No immediate works required	40+	200.6	8.0	B2
T44	Common ash	16	4	450/ 450/ 390/ 350	7	7	7	7	7	M	Fair	Fair	On the southern side of ditch	No immediate works required	40+	307.4	9.9	B2
T45	Common ash	4	2	100/ 50	8	1	5	1	1.5	Y	Poor	Fair	-	No immediate works required	40+	5.7	1.3	C1
T46	Common ash	12	1	280	2.5	2.5	2.5	2.5	2.5	SM	Fair	Fair	Ivy-clad, inhibiting inspection		40+	35.5	3.4	C1
T47	Domestic apple	4.5	1	300	2	2	3	3	2.5	M	Poor	Good	Hollow stem	Assess hazard risk	20-40	40.7	3.6	B1
T48	Domestic apple	3.5	1	340	3	3	3	3	2	OM	Fair	Poor	-	No immediate works required	20-40	52.3	4.1	B1
T49	Sycamore	12	1	290	2	3	2.5	2.5	2.5	EM	Fair	Fair	-	No immediate works required	40+	38.0	3.5	C1
T50	Sycamore	12	1	290	2	3	2.5	2.5	2.5	EM	Fair	Fair	-	No immediate works required	40+	38.0	3.5	C1
T51	Sycamore	12	5	300/ 280/ 250/ 200/ 190	3	3	3	3	2	EM	Fair	Fair	-	No immediate works required	40+	138.9	6.6	C1
T52	Domestic apple	3	2	70/ 70/	0.5	0.5	0.5	0.5	1	Y	Fair	Fair	-	No immediate works required	40+	4.4	1.2	C1
T53	Common blackthorn	6.5	1	180	1.5	1.5	1.5	1.5	2	SM	Fair	Fair	-	No immediate works required	40+	14.7	2.2	C1
T54	Common blackthorn	6.5	1	180	1.5	1.5	1.5	1.5	2	SM	Fair	Fair	-	No immediate works required	40+	14.7	2.2	C1
T55	Field maple	12	1	280	2.5	2.5	2.5	2.5	1	SM	Fair	Fair	-	No immediate works required	40+	35.5	3.4	C1
T56	Common ash	12	3	300/ 200/ 190	3.5	3.5	3.5	3.5	2	SM	Fair	Fair	In drainage ditch	No immediate works required	40+	75.1	4.9	C1

Table 1: Schedule of Trees and Tree Quality Assessment\*

No	Species	Ht.	S	St. 1.5m	Canopy Spread				Cr.Cl	Ls	SC	PC	Comments /Observation	Preliminary Management Advice	LE	RPA	RPA <sup>m2</sup>	Cat**
					N	S	E	W										
T57	Common horse chestnut	7.5	1	300	1.5	1.5	1.5	1.5	1	Y	Fair	Poor	Extensive leaf wilt	Monitor for decline	0-10	40.7	3.6	C1
T58	Common ash	12	4	400/ 280/ 200/ 200	5	5	5	5	4	EM	Fair	Good	-	No immediate works required	40+	144.0	6.8	B2
T59	Common ash	14	1	400	4	4	3.5	6	1	EM	Fair	Fair	Ivy-clad, inhibiting inspection		40+	72.4	4.8	B2
T60	Goat willow	9	6	220	4.5	4.5	4.5	4.5	2.5	EM	Fair	Fair	-	No immediate works required	40+	131.4	6.5	C1
T61	Common hawthorn	5	4	300/ 300/ 200/ 150	3	3	3	3	2	EM	Fair	Fair	-	No immediate works required	40+	109.7	5.9	C1
T62	Wild cherry	5	3	200/ 150/ 90	2	1	1	1	1.5	SM	Poor	Fair	One main limb removed from eastern canopy	Assess hazard risk	40+	31.9	3.2	C1
T63	Common blackthorn	7	1	200/ 200	2	2	2	2	3	EM	Fair	Fair	-	No immediate works required	40+	36.2	3.4	C1
T64	Common blackthorn	7	1	200/ 200	2	2	2	2	3	EM	Fair	Fair	-	No immediate works required	40+	36.2	3.4	C1
T65	Common blackthorn	7	1	200/ 200	2	2	2	2	3	EM	Fair	Fair	Access restricted	No immediate works required	40+	36.2	3.4	C1
T66	Common blackthorn	7	1	200/ 200	2	2	2	2	3	EM	Fair	Fair	Access restricted	No immediate works required	40+	36.2	3.4	C1
T67	Common blackthorn	7	1	200/ 200	2	2	2	2	3	EM	Fair	Fair	Access restricted	No immediate works required	40+	36.2	3.4	C1
T68	Common blackthorn	7	1	200/ 200	2	2	2	2	3	EM	Fair	Fair	Access restricted	No immediate works required	40+	36.2	3.4	C1
T69	Domestic apple	9	1	350	4	2	3	3	3	EM	Fair	Fair	-	No immediate works required	40+	55.4	4.2	C1
T70	Common plum	5	5	100	2.5	2.5	2.5	2.5	0	SM	Fair	Fair	Access restricted	No immediate works required	40+	4.5	1.2	C1
T71	Common plum	6.5	2	200	2	2	2	2	0	EM	Fair	Fair	-	No immediate works required	40+	18.1	2.4	C1

Table 1: Schedule of Trees and Tree Quality Assessment\*

No	Species	Ht.	S	St. 1.5m	Canopy Spread				Cr.Cl	Ls	SC	PC	Comments /Observation	Preliminary Management Advice	LE	RPA	RPA <sup>m2</sup>	Cat**
					N	S	E	W										
T72	Common hawthorn	6	1	250	1.5	1.5	1.5	1.5	0	SM	Fair	Fair	Access to main stem restricted	No immediate works required	40+	28.3	3.0	C1
T73	Common plum	8	2	300/ 300	6	5	5	5	1.8	M	Good	Good	-	No immediate works required	40+	81.4	5.1	B1
T74	Pedunculate oak	12	3	280/ 220/ 200	4	4	4	4	2	SM	Fair	Fair	-	No immediate works required	40+	75.5	4.9	B1
T75	Pedunculate oak	14	1	400	5	3	5	5	2.5	EM	Fair	Fair	-	No immediate works required	40+	72.4	4.8	B1
T76	Pedunculate oak	12	3	200/ 180/ 100	4	4	4	4	2.5	SM	Fair	Fair	-	No immediate works required	40+	37.3	3.4	B2
T77	Pedunculate oak	12	1	500	5	5	5	5	2	EM	Fair	Fair	Ivy-clad, inhibiting inspection	Recommend re-assessment following ivy clearance	40+	113.1	6.0	B1
T78	Pedunculate oak	13	2	400/ 400	5.5	5.5	5.5	5.5	3	EM	Fair	Fair	-	No immediate works required	40+	144.8	6.8	B1
T79	Common ash	10	4	310/ 300/ 280/ 150	4	4	4	4	2	EM	Fair	Fair	-	No immediate works required	40+	129.8	6.4	B1
T80	Common hawthorn	3.5	2	100/ 100	1.5	1.5	1.5	1.5	0	SM	Fair	Fair	-	No immediate works required	40+	9.0	1.7	C1
T81	Common hawthorn	3	1	70	1	1	1	1	1.5	Y	Fair	Fair	-	No immediate works required	40+	2.2	0.8	C1
T82	Common hawthorn	3	1	70	1	1	1	1	1.5	Y	Fair	Fair	-	No immediate works required	40+	2.2	0.8	C1
T83	Goat willow	12	1	450	5	5	5	5	0	EM	Good	Good	-	No immediate works required	40+	91.6	5.4	B1
T84	Pedunculate oak	7	1	75	2	2	2	2	0	SM	Fair	Fair	Unable to access	No immediate works required	40+	2.5	0.9	C1
T85	Spruce unknown	7	1	150	3	3	3	3	0.5	SM	Good	Good	Unable to access through thick scrub	No immediate works required	40+	10.2	1.8	C1
T86	Silver birch	8	1	250	1.5	1.5	1.5	4.5	1	SM	Fair	Fair	-	No immediate works required	40+	28.3	3.0	C1

Table 1: Schedule of Trees and Tree Quality Assessment\*

No	Species	Ht.	S	St. 1.5m	Canopy Spread				Cr.Cl	Ls	SC	PC	Comments /Observation	Preliminary Management Advice	LE	RPA	RPA <sup>m2</sup>	Cat**
					N	S	E	W										
T87	Silver birch	8	1	250	1.5	1.5	1.5	4.5	1	SM	Fair	Fair	-	No immediate works required	40+	28.3	3.0	C1
T88	Wild cherry	9.5	1	380	3	3	3	3	2.5	M	Fair	Poor	Bleeding on main stem in decline within area of prunus scrub	Re inspect and assess condition	0-10	65.3	4.6	C1
T89	Goat willow	5	1	50	2	3	2	2	3	EM	Poor	Poor	Nearly dead	Assess for removal	0-10	1.1	0.6	U
T90	Pedunculate oak	8	1	180	2	2	2	2	0.5	SM	Good	Good	-	No immediate works required	40+	14.7	2.2	B1
T91	Common hawthorn	5	12	25	2	2	2	2	0.5	SM	Good	Good	-	No immediate works required	40+	3.4	1.0	C1
T92	Common ash	6.5	2	50/50	3	3	3	3	0.5	SM	Fair	Good	-	No immediate works required	40+	2.3	0.8	C1
T93	Common ash	7	3	50x3	3	3	3	3	2	SM	Fair	Good	Access restricted	No immediate works required	40+	3.4	1.0	C1
T94	Common ash	7	1	75	2	2	2	2	1	Y	Good	Good	Access restricted	No immediate works required	40+	2.5	0.9	C1
T95	Domestic apple	2	1	150	3	3	3	3	0.5	M	Fair	Fair	One of several orchard trees in scrub	No immediate works required	40+	10.2	1.8	C2
T96	Domestic apple	3	6	80x4/ 60 /50	3	3	3	3	0.5	M	Good	Good	-	No immediate works required	40+	13.9	2.1	C1
T97	Domestic apple	3	1	100	3	3	3	3	1	EM	Good	Good	-	No immediate works required	40+	4.5	1.2	C1
T98	Domestic apple	3	6	90/ 85/ 80/ 70/ 60/ 50	2	2	2	2	0.5	EM	Fair	Good	-	No immediate works required	40+	14.3	2.1	C1
T99	Common plum	4	1	100	2	2	2	2	0.5	M	Poor	Poor	In decline	Monitor vitality	0-10	4.5	1.2	C1
T100	Common plum	2	1	150	1	1	1	1	0.5	M	Poor	Poor	Nearly dead	Assess for removal	0-10	10.2	1.8	U
T101	Domestic apple	4	1	100	2	2	2	2	0.5	EM	Fair	Good	-	No immediate works required	40+	4.5	1.2	C1
T102	Common hawthorn	4	12	100x 12	3	3	3	3	0.5	EM	Fair	Good	-	No immediate works required	40+	54.3	4.2	C1

Table 1: Schedule of Trees and Tree Quality Assessment\*

No	Species	Ht.	S	St. 1.5m	Canopy Spread				Cr.Cl	Ls	SC	PC	Comments /Observation	Preliminary Management Advice	LE	RPA	RPAm <sup>2</sup>	Cat**
					N	S	E	W										
T103	Common plum	4.5	1	90	1.5	1.5	1.5	1.5		SM	Fair	Good	Inaccessible	No immediate works required	40+	3.7	1.1	C1
T104	Common blackthorn	4	1	100	3	3	3	3	0.5	M	Poor	Fair	Break out of medium size branches in canopy		20-40	4.5	1.2	C1
T105	Common plum	3	1	150	3	3	3	3	2	M	Poor	Poor	Cavity at 5m above ground on north side	Assess hazard risk	0-10	10.2	1.8	C1
T106	Common blackthorn	5	1	150	3	3	3	3	2	SM	Fair	Good	Young thicket	No immediate works required	40+	10.2	1.8	C1
T107	Domestic apple	7	6	50x6	3	3	3	3	2	M	Fair	Fair	Access restricted	No immediate works required	40+	6.8	1.5	C1
T108	Common hawthorn	6	1	150	5	5	5	5	1	M	Fair	Good	Inaccessible	No immediate works required	40+	10.2	1.8	B1
T109	Common ash	6	6	50x6	3	3	3	3	2	SM	Fair	Good	-	No immediate works required	40+	6.8	1.5	C1
T110	Common plum	3	1	100	3	3	3	3	0.5	M	Fair	Good	Inclusion main fork		10_20	4.5	1.2	C1
T111	European black pine	4	1	150	2	2	2	2	0.5	SM	Good	Good	-	No immediate works required	40+	10.2	1.8	C1
T112	Pedunculate oak	6.5	1	140	3	3	3	3	0.5	SM	Good	Good	-	No immediate works required	40+	8.9	1.7	B1
T113	Lawson's Cypress	9	1	200	2	2	2	2	0.25	EM	Good	Good	Ornamental cultivar	No immediate works required	40+	18.1	2.4	C1
T114	Cherry plum	7	1	230	3	3	3	3	2	EM	Good	Good	-	No immediate works required	40+	23.9	2.8	B1
T115	Cherry plum	7.5	1	330	3	3	3	4	2	M	Good	Good	-	No immediate works required	40+	49.3	4.0	B1
T116	Torbay palm	3.5	1	250	1	1	1	1	1.5	EM	Good	Good	-	No immediate works required	40+	28.3	3.0	C1
T117	Box elder	9	1	290	3	3	4	3	3	M	Fair	Fair	Decline in upper canopy north side, branch tear out,	Monitor and assess condition	10_20	38.0	3.5	C1
T118	Eucalyptus sp	15.5	1	440	5	3	3	4	5	M	Good	Fair	Sparse canopy	No immediate works required	40+	87.6	5.3	C1

Table 1: Schedule of Trees and Tree Quality Assessment\*

No	Species	Ht.	S	St. 1.5m	Canopy Spread				Cr.Cl	Ls	SC	PC	Comments /Observation	Preliminary Management Advice	LE	RPA	RPA <sup>m2</sup>	Cat**
					N	S	E	W										
T119	Silver birch	17	1	200	3	2	3	2	1	EM	Good	Good	-	No immediate works required	40+	18.1	2.4	A2
T120	European beech	16	1	240	5	4	4	4	2	EM	Fair	Good	Inclusion main fork	Assess hazard risk	40+	26.1	2.9	B1
T121	Eucalyptus sp	19	1	800	6	6	10	6	4	M	Fair	Fair	Canopy sparse throughout	Monitor for further decline and assess	10_20	289.5	9.6	C1
T122	Lawson's Cypress	12	3	200/ 150/ 150	2	2	2	2	0	M	Good	Good	-	No immediate works required	40+	38.5	3.5	C1
T123	European black pine	6.5	1	110	2	2	2	2	2	SM	Good	Good	-	No immediate works required	40+	5.5	1.3	C1
T124	Purple leaf birch	12.5	1	160	2	1	1.5	1	1	EM	Good	Good	-	No immediate works required	40+	11.6	1.9	B1
T125	Common plum	6	2	100/ 70	4	2	2	2	1	SM	Good	Good	-	No immediate works required	40+	6.7	1.5	B1
T126	Indian bean tree	6.5	1	70	3	0	3	3	2	SM	Good	Fair	Sparse canopy	Monitor for further decline and assess	40+	2.2	0.8	C1
T127	Cherry plum	6	1	60	2	1	2	2	1	SM	Good	Good	-	No immediate works required	40+	1.6	0.7	C1
T128	Lawson's Cypress	4	6	25x6	1	1	1	1	0	SM	Good	Good	-	No immediate works required	40+	1.7	0.7	C1
T129	Dawn redwood	14.5	1	340	3	3	3	3	2	EM	Good	Good	-	No immediate works required	40+	52.3	4.1	A1
T130	Weeping willow	8.5	1	360	5	5	5	5	1.5	M	Good	Good	-	No immediate works required	40+	58.6	4.3	A1
T131	Deodar cedar	8	1	100	3	3	3	3	0	SM	Good	Good	-	No immediate works required	40+	4.5	1.2	B2
T132	Lawson's Cypress	11.5	1	300	1	1	1	1	0	M	Good	Good	-	No immediate works required	40+	40.7	3.6	C1
T133	Eucalyptus sp	0	1	550	2	3	4	5	3	M	Good	Good	Co-dominant with neighbouring eucalyptus	No immediate works required	40+	136.8	6.6	B1
T134	Eucalyptus sp	22	1	590	8	2	6	5	5	OM	Good	Good	Minor lean to north	No immediate works required	40+	157.5	7.1	B1

Table 1: Schedule of Trees and Tree Quality Assessment\*

No	Species	Ht.	S	St. 1.5m	Canopy Spread				Cr.Cl	Ls	SC	PC	Comments /Observation	Preliminary Management Advice	LE	RPA	RPA <sup>m2</sup>	Cat**
					N	S	E	W										
T135	Indian bean tree	6	1	130	3	3	3	3	2	SM	Good	Good	-	No immediate works required	40+	7.6	1.6	B1
T136	Silver birch	14	1	160	3	3	3	3	3	EM	Good	Good	-	No immediate works required	40+	11.6	1.9	B1
T137	Silver birch	16.5	1	220	3	3	3	3	2	EM	Good	Good	-	No immediate works required	40+	21.9	2.6	B1
T138	Common horse chestnut	9	1	290	3	3	3	3	2	M	Good	Good	Leaf miner present	No immediate works required	40+	38.0	3.5	B1
T139	Lawson's Cypress	5.5	1	75	1	1	1	1	0	SM	Good	Good	-	No immediate works required	40+	2.5	0.9	C1
T140	Eucalyptus sp	24.5	1	630	4	3	4	4	1.5	M	Good	Good	-	No immediate works required	40+	179.6	7.6	B1
T141	Lawson's Cypress	15	2	300/300	2	2	2	2	0	M	Good	Good	-	No immediate works required	40+	81.4	5.1	C1
T142	European black pine	10.2	1	200	2	2	2	2	1.5	EM	Good	Good	-	No immediate works required	40+	18.1	2.4	B1
T143	Lawson's Cypress	6.5	1	300	1	1	1	1	0.5	M	Good	Good	-	No immediate works required	40+	40.7	3.6	C1
T144	Silver birch	15	1	260	3	3	3	3	1	EM	Good	Good	-	No immediate works required	40+	30.6	3.1	A2
T145	Cherry plum	7.5	5	160/160/100x3	4	4	4	4	2	M	Good	Good	-	No immediate works required	40+	36.7	3.4	B1
T146	Lawson's Cypress	14	1	300	2	2	2	2	0	M	Good	Good	-	No immediate works required	40+	40.7	3.6	C1
T147	Eucalyptus sp	19.5	1	470	2	4	4	4	5	M	Good	Good	-	No immediate works required	40+	99.9	5.6	B1
T148	Eucalyptus sp	12	1	720	5	5	8	8	3	M	Fair	Fair	Inclusion main fork	Assess hazard risk	40+	234.5	8.6	B2
T149	Eucalyptus sp	23.5	1	730	3	3	3	3	4	M	Good	Good	-	No immediate works required	20-40	241.1	8.8	A2
T150	Common ash	17	1	540	6	6	6	6	5	M	Good	Fair	Sparse canopy	Monitor for further decline and assess	20-40	131.9	6.5	C1

Table 1: Schedule of Trees and Tree Quality Assessment\*

No	Species	Ht.	S	St. 1.5m	Canopy Spread				Cr.Cl	Ls	SC	PC	Comments /Observation	Preliminary Management Advice	LE	RPA	RPA <sup>m2</sup>	Cat**
					N	S	E	W										
T151	Corkscrew willow	11	2	230/ 210	2	2	4	4	2	M	Poor	Fair	Fork failure	Assess hazard risk	40+	43.9	3.7	C1
T152	False acacia	11	2	280/ 280	3	3	4	4	2.5	M	Poor	Good	Weak fork	Assess hazard risk	10_20	70.9	4.8	C1
T153	Douglas fir	20	1	470	3	3	3	3	2	M	Good	Good	-	No immediate works required	40+	99.9	5.6	B1
T154	European weeping beech	10.5	1	320	5	5	5	5	2.5	M	Good	Good	Weeping beech	No immediate works required	40+	46.3	3.8	B2
T155	Lawson's Cypress	20	1	600	4	4	4	4	0	M	Good	Good	-	No immediate works required	40+	162.9	7.2	C1
T156	Weeping willow	14	1	870	7	7	7	7	1.5	M	Good	Good	-	No immediate works required	40+	342.4	10.4	B1
T157	Silver birch	17	1	540	4	4	4	4	4	M	Fair	Good	Ivy-clad, inhibiting inspection	Clear ivy and re-inspect	40+	131.9	6.5	C1
T158	Common horse chestnut	15	1	410	4	4	4	4	2	M	Poor	Fair	Bleeding canker to be confirmed split limb on north side	Assess hazard risk	0-10	76.0	4.9	U
T159	Red oak	16	1	530	6	4	4	6		M	Fair	Fair	-	No immediate works required	40+	127.1	6.4	B1
T160	Pedunculate oak	14.5	1	470	5	5	5	5		EM	Fair	Fair	-	No immediate works required	40+	99.9	5.6	B1
T161	Weeping willow	13.5	1	780	3	5	5	5	1.5	M	Good	Good	-	No immediate works required	40+	275.2	9.4	A2
T162	Norway maple	11	1	210	3	3	3	3	2	EM	Good	Good	-	No immediate works required	40+	20.0	2.5	B1
T163	Lawson's Cypress	6	1	300	1.5	1.5	1.5	1.5	0	OM	Good	Good	-	No immediate works required	40+	40.7	3.6	C1
T164	Eucalyptus sp	22	1	580	5	5	5	5	5	M	Good	Good	-	No immediate works required	40+	152.2	7.0	B1
T165	Box elder	8	2	210/ 160	4	4	4	4	2	M	Good	Good	-	No immediate works required	20-40	31.5	3.2	C1
T166	Eucalyptus sp	22	1	540	4	4	4	4	5	M	Fair	Fair	-	No immediate works required	40+	131.9	6.5	B1



Table 1: Schedule of Trees and Tree Quality Assessment\*

No	Species	Ht.	S	St. 1.5m	Canopy Spread				Cr.Cl	Ls	SC	PC	Comments /Observation	Preliminary Management Advice	LE	RPA	RPA <sup>m2</sup>	Cat**
					N	S	E	W										
T167	Silver birch	15	1	240	3	3	3	3	2	EM	Good	Good	-	No immediate works required	40+	26.1	2.9	B1
T168	Norway maple	7.2	1	120	2	2	2	2	2	SM	Good	Good	-	No immediate works required	40+	6.5	1.4	C1
T169	Lawson's Cypress	0	6	50x6	1	1	1	1	0	M	Good	Good	-	No immediate works required	40+	6.8	1.5	C1
T170	Eucalyptus sp	20.5	1	640	5	4	4	4	4	M	Good	Good	-	No immediate works required	40+	185.3	7.7	B1
T171	Lawson's Cypress	9	1	250	2	2	2	2	0	M	Good	Good	-	No immediate works required	40+	28.3	3.0	C1
T172	Indian bean tree	10	1	270	3	3	3	3	2	EM	Good	Good	-	No immediate works required	40+	33.0	3.2	B1
T173	Cherry plum	6	1	130	2.5	2.5	2.5	2.5	1	EM	Good	Good	-	No immediate works required	40+	7.6	1.6	C2
T174	Lawson's Cypress	13	1	300	3	3	3	3	0	M	Good	Good	-	No immediate works required	40+	40.7	3.6	B1
T175	Blue Atlas	13.5	1	420	4	4	4	4	0	EM	Good	Good	-	No immediate works required	40+	79.8	5.0	B1
T176	Corkscrew willow	9.5	6	180/ 180/ 120x4	3	3	3	3	1	M	Good	Good	-	No immediate works required	40+	54.3	4.2	B2
T177	Lawson's Cypress	11	1	300	2	2	2	2	0	M	Good	Good	-	No immediate works required	40+	40.7	3.6	C1
T178	Eucalyptus sp	25	1	650	5	7	3	5	4	M	Good	Good	-	No immediate works required	40+	191.1	7.8	B2
T179	Eucalyptus sp	19.5	1	690	7	3	6	3	4	M	Fair	Good	Two major limbs removed at first fork co-dominant with neighbouring eucalyptus	Assess hazard risk	20-40	215.4	8.3	B1
T180	European beech	13.6	1	250	5	5	5	5	1.5	EM	Good	Good	-	No immediate works required	40+	28.3	3.0	B1
T181	Hinoki cypress	7.5	1	300	2	2	2	2	0	M	Good	Good	-	No immediate works required	40+	40.7	3.6	C1
T182	Cherry plum	7	3	180/ 80/ 80	3	3	3	3	1	EM	Good	Good	-	No immediate works required	40+	20.4	2.6	B1

Table 1: Schedule of Trees and Tree Quality Assessment\*

No	Species	Ht.	S	St. 1.5m	Canopy Spread				Cr.Cl	Ls	SC	PC	Comments /Observation	Preliminary Management Advice	LE	RPA	RPAm <sup>2</sup>	Cat**
					N	S	E	W										
T183	Lawson's Cypress	9	1	300	2	2	2	2	0	EM	Good	Good	-	No immediate works required	40+	40.7	3.6	C1
T184	Eucalyptus sp	21	1	410	3	6	3	4	4	M	Good	Good	-	No immediate works required	40+	76.0	4.9	B1
T185	Eucalyptus sp	21	1	510	6	6	6	3	3	M	Fair	Fair	Co-dominant with neighbouring eucalyptus	No immediate works required	40+	117.7	6.1	B1
T186	Norway spruce	11	1	250	2	2	2	2	0	EM	Good	Good	-	No immediate works required	40+	28.3	3.0	B1
T187	Indian bean tree	10	2	310	5	5	5	5	1.5	M	Good	Good	-	No immediate works required	20-40	74.1	4.9	B1
T188	Cherry plum	8	1	170	2	3	3	3	2.5	EM	Good	Good	-	No immediate works required	40+	13.1	2.0	B2
T189	Norway maple	7.5	1	270	4	5	5	5	2.5	EM	Good	Good	Co-dominant canopy	No immediate works required	40+	33.0	3.2	B1
T190	Lombardy poplar	24	1	830	2.5	2.5	2.5	2.5	3	M	Good	Good	-	No immediate works required	40+	311.7	10.0	A2
T191	Common hawthorn	5	3	300/ 300/ 280	3	3	2.5	2.5	2	M	Good	Good	In ditch, access to main stem restricted	No immediate works required	40+	116.9	6.1	B1
T192	Common hawthorn	7	5	200/ 200/ 170/ 150/ 80/ 80	2	2	2	2	0	SM	Fair	Fair	In ditch, access to stem restricted	No immediate works required	40+	65.2	4.6	C1
T193	Common plum	6	4	350/ 200/ 200/ 160	4.5	4.5	4.5	4.5	2	M	Fair	Good	In ditch, large mature specimen	No immediate works required	40+	103.2	5.7	B1
T194	Common hawthorn	4	1	100	1.5	1.5	1.5	1.5	0	SM	Fair	Fair	Access to main stem restricted	No immediate works required	40+	4.5	1.2	C1
T195	Common hawthorn	2.5	1	90	1	1	1	1	0	SM	Fair	Fair	-	No immediate works required	40+	3.7	1.1	C1
T196	Common hawthorn	6	2	350/ 180	2	2	2	1	1	EM	Fair	Fair	In ditch, access restricted	No immediate works required	40+	70.1	4.7	C1
T197	Common hawthorn	8	1	250	2.5	2.5	2.5	2.8	0.5	EM	Fair	Fair	Access restricted	No immediate works required	40+	28.3	3.0	C1

Table 1: Schedule of Trees and Tree Quality Assessment\*

No	Species	Ht.	S	St. 1.5m	Canopy Spread				Cr.Cl	Ls	SC	PC	Comments /Observation	Preliminary Management Advice	LE	RPA	RPA <sup>m2</sup>	Cat**
					N	S	E	W										
T198	Common hawthorn	10	4	250/ 250/ 190/ 100	3.5	3.5	3.5	3.5	1	M	Fair	Good	Access restricted	No immediate works required	40+	77.4	5.0	B1
T199	Common ash	17	3	500/ 500/ 450	3	3	3	3	2	EM	Poor	Fair	Access restricted	No immediate works required	20-40	317.8	10.1	B2
T200	Common hawthorn	8	2	250/ 200	2.5	2.5	2.5	2.5	1	EM	Fair	Fair	Access restricted	No immediate works required	40+	46.4	3.8	C1
T201	Common hawthorn	8	2	250/ 200	2.5	2.5	2.5	2.5	1	EM	Fair	Fair	Access restricted	No immediate works required	40+	46.4	3.8	C1
T202	Sycamore	13	1	450	3	3	3	3	2	EM	Fair	Good	Access restricted	No immediate works required	40+	91.6	5.4	B1
T203	Sycamore	16	3	400/ 350/ 300	4	4	4	4	2	M	Fair	Fair	Access restricted	No immediate works required	40+	168.5	7.3	B2
T204	Sycamore	12	2	350/30 0	3	3	3	3	2	EM	Fair	Fair	Access restricted	No immediate works required	40+	96.1	5.5	C1
T206	Common hawthorn	6	2	350/ 300	3.5	3.5	3.5	3.5	0	EM	Good	Good	Access to base restricted	No immediate works required	40+	96.1	5.5	C1
T207	Common hawthorn	6	2	350/ 300	3.5	3.5	3.5	3.5	0	EM	Good	Good	Access to base restricted	No immediate works required	40+	96.1	5.5	C1
T208	Sycamore	6.5	1	200	2	2	2	2	2	SM	Fair	Fair	-	No immediate works required	40+	18.1	2.4	C1
T208	Sycamore	6.5	1	200	2	2	2	2	2	SM	Fair	Fair	-	No immediate works required	40+	18.1	2.4	C1
T208	Sycamore	10	8	200x4/ 150x4	5	5	4	4	2	EM	Fair	Fair	Canopy suppressed by neighbour ash, on western side of ditch, access to stem restricted	No immediate works required	40+	110.8	5.9	B2
T209	Common ash	16	7	450/ 400/ 350/ 300/ 200x3	4	4	4	4	1.5	SM	Fair	Fair	To east of drainage ditch, access to stem restricted	No immediate works required	40+	285.0	9.5	B1
T210	Common alder	8	1	300	2	2	2	2	2	SM	Fair	Fair	-	No immediate works required	40+	40.7	3.6	C1
T211	Common alder	8	1	300	2	2	2	2	2	SM	Fair	Fair	-	No immediate works required	40+	40.7	3.6	C1

Table 1: Schedule of Trees and Tree Quality Assessment\*

No	Species	Ht.	S	St. 1.5m	Canopy Spread				Cr.Cl	Ls	SC	PC	Comments /Observation	Preliminary Management Advice	LE	RPA	RPAm <sup>2</sup>	Cat**
					N	S	E	W										
T212	Common alder	8	1	300	2	2	2	2	2	SM	Fair	Fair	-	No immediate works required	40+	40.7	3.6	C1
T214	Common ash	16	1	700	6	6	6	6	2	M	Fair	Good	Inaccessible	No immediate works required	40+	221.7	8.4	B1
T215	Common ash	16	1	700	6	6	6	6	2	M	Fair	Good	Inaccessible	No immediate works required	40+	221.7	8.4	B1
T216	Common alder	8	1	300	2	2	2	2	2	SM	Fair	Fair	-	No immediate works required	40+	40.7	3.6	C1
T217	Common alder	8	1	300	2	2	2	2	2	SM	Fair	Fair	-	No immediate works required	40+	40.7	3.6	C1
T218	Common alder	8	1	300	2	2	2	2	2	SM	Fair	Fair	-	No immediate works required	40+	40.7	3.6	C1
T219	Common alder	12	1	380	3.5	3.5	3.5	3.5	2	EM	Fair	Fair	-	No immediate works required	40+	65.3	4.6	C1
T220	Common alder	12	1	380	3.5	3.5	3.5	3.5	2	EM	Fair	Fair	-	No immediate works required	40+	65.3	4.6	C1
T221	Common alder	12	1	450	3.5	3.5	3.5	3.5	2	EM	Fair	Fair	-	No immediate works required	40+	91.6	5.4	C1
T222	Common alder	12	1	380	3.5	3.5	3.5	3.5	2	EM	Fair	Fair	-	No immediate works required	40+	65.3	4.6	C1
T225	Common alder	12	1	380	3.5	3.5	3.5	3.5	2	EM	Fair	Fair	-	No immediate works required	40+	65.3	4.6	B1
T226	Common ash	10	1	265	2.5	2.5	2.5	2.5	3	SM	Fair	Good	-	No immediate works required	40+	31.8	3.2	C1
T227	Pedunculate oak	7.5	1	190	2.5	2	2	2	2	Y	Fair	Fair	-	No immediate works required	40+	16.3	2.3	C1
T228	Common ash	6.5	1	70	1.5	1.5	1.5	1.5	1.6	Y	Fair	Fair	-	No immediate works required	40+	2.2	0.8	C1
T229	Common ash	7	1	200	2	2	2	2	2	SM	Good	Fair	Minor leaf wilt	Monitor for further decline and assess	40+	18.1	2.4	C1
T230	Common ash	8	1	180	2	2	2	2	1.5	SM	Fair	Fair	-	No immediate works required	40+	14.7	2.2	C1

Table 1: Schedule of Trees and Tree Quality Assessment\*

No	Species	Ht.	S	St. 1.5m	Canopy Spread				Cr.Cl	Ls	SC	PC	Comments /Observation	Preliminary Management Advice	LE	RPA	RPAm <sup>2</sup>	Cat**
					N	S	E	W										
T231	Norway maple	4.5	1	70	1.5	1.5	1.5	1.5	1	Y	Fair	Poor	Leaf necrosis throughout canopy	Monitor for further decline and assess	0-10	2.2	0.8	C1
T232	Common ash	7.5	1	170	2	2	1.5	1.5	1	SM	Fair	Fair	-	No immediate works required	40+	13.1	2.0	C1
T233	Common ash	7.5	1	150	2	2	2	2	1.6	SM	Fair	Fair	-	No immediate works required	40+	10.2	1.8	C1
T234	Silver birch	5.5	1	80	1.5	1.5	1.5	1.5	1	Y	Fair	Fair	-	No immediate works required	40+	2.9	1.0	C1
T235	Common lime	7	1	160	2.5	2.5	2.5	2.5	1	SM	Fair	Fair	Compression fork at 1m	Assess hazard risk	40+	11.6	1.9	C1
T236	Common ash	7.5	1	160	1	1	1	1	1.7	SM	Fair	Fair	-	No immediate works required	40+	11.6	1.9	C1
T237	Common ash	7.5	1	170	1	1	1	1	2	SM	Fair	Fair	-	No immediate works required	40+	13.1	2.0	C1
T238	Pedunculate oak	8	1	230	3	3	3	3	2.5	SM	Fair	Fair	-	No immediate works required	40+	23.9	2.8	C1
T239	Silver birch	9	1	210	1.5	1.5	1.5	1.5	1.5	SM	Fair	Fair	-	No immediate works required	40+	20.0	2.5	C1
T240	Common ash	7.5	1	180	2	2	2	2	2	SM	Fair	Fair	-	No immediate works required	40+	14.7	2.2	C1
T241	Common ash	8	1	200	1.5	1.5	1.5	1.5	1	SM	Fair	Fair	-	No immediate works required	40+	18.1	2.4	C1
T242	Common ash	8	1	200	1.5	1.5	1.5	1.5	1	SM	Fair	Fair	-	No immediate works required	40+	18.1	2.4	C1
T243	Pedunculate oak	5	4	110/ 90/ 90/ 80	1.5	1.5	1.5	1.5	0	Y	Fair	Fair	-	No immediate works required	40+	15.7	2.2	C1
T244	Lawson's Cypress	6.5	1	280	1.5	1.5	1.5	1.5	0	Y	Fair	Fair	-	No immediate works required	40+	35.5	3.4	C1
T245	Wild cherry	6	1	100	1.5	1.5	1.5	1.5	0.5	Y	Fair	Fair	-	No immediate works required	40+	4.5	1.2	C1
T246	Pedunculate oak	4	1	70	1	1	1	1	0	Y	Fair	Fair	-	No immediate works required	40+	2.2	0.8	C1

Table 1: Schedule of Trees and Tree Quality Assessment\*

No	Species	Ht.	S	St. 1.5m	Canopy Spread				Cr.Cl	Ls	SC	PC	Comments /Observation	Preliminary Management Advice	LE	RPA	RPAm <sup>2</sup>	Cat**
					N	S	E	W										
T247	Sweet chestnut	4	1	70	1	1	1	1	1.5	Y	Fair	Fair	-	No immediate works required	40+	2.2	0.8	C1
T248	Common lime	3.5	1	80	1.5	1.5	1.5	1.5	0	Y	Fair	Fair	-	No immediate works required	40+	2.9	1.0	C1
T249	Sycamore	5	2	70/ 70	2	1.5	1.5	1.5	1	Y	Fair	Fair	-	No immediate works required	40+	4.4	1.2	C1
T250	Common alder	6	1	160	1.5	1	1	1	0	Y	Fair	Fair	-	No immediate works required	40+	11.6	1.9	C1
T251	Common ash	6.5	1	100	1.5	1.5	1.5	1.5	0.5	Y	Fair	Fair	-	No immediate works required	40+	4.5	1.2	C1
T252	Common lime	6	1	250	2	2	2	2	0	Y	Fair	Fair	-	No immediate works required	40+	28.3	3.0	C1
T253	Lawson's Cypress	7.5	1	200	1	1	1	1	2	SM	Fair	Fair	-	No immediate works required	40+	18.1	2.4	C1
T254	Lawson's Cypress	7.5	1	200	1	1	1	1	2	SM	Fair	Fair	-	No immediate works required	40+	18.1	2.4	C1
T255	Common hawthorn	4	1	200	2	2	2	2	0	SM	Fair	Fair	-	No immediate works required	40+	18.1	2.4	C1
T256	Black poplar	23	5	600/ 600/ 575/ 450/ 300	5	7	7	6	3	M	Fair	Fair	Ivy-clad, inaccessible		40+	607.6	13.9	A1
T257	Common ash	3.5	1	70	0.5	0.5	0.5	0.5	0.5	Y	Fair	Fair	-	No immediate works required	40+	2.2	0.8	C1
T258	Common ash	5.5	1	80	1	1	1	1	0	Y	Fair	Fair	-	No immediate works required	40+	2.9	1.0	C1
T259	Wild cherry	4	1	70	1	1	1	1	1	Y	Fair	Fair	-	No immediate works required	40+	2.2	0.8	C1
T260	Common ash	5	1	100	1	1	1	1	0.5	Y	Fair	Fair	-	No immediate works required	40+	4.5	1.2	C1
T261	Common lime	5	1	100	1.5	1.5	1.5	1.5	1.5	SM	Fair	Fair	-	No immediate works required	40+	4.5	1.2	C1

Table 1: Schedule of Trees and Tree Quality Assessment\*

No	Species	Ht.	S	St. 1.5m	Canopy Spread				Cr.Cl	Ls	SC	PC	Comments /Observation	Preliminary Management Advice	LE	RPA	RPA <sup>m2</sup>	Cat**
					N	S	E	W										
T262	Common ash	4.5	1	90	1.5	1.5	1.5	1.5	1.5	Y	Fair	Fair	-	No immediate works required	40+	3.7	1.1	C1
T263	Pedunculate oak	8	1	190	2.5	2.5	2.5	2.5	2	SM	Fair	Fair	-	No immediate works required	40+	16.3	2.3	C1
T264	Common ash	8.5	1	250	2.5	2.5	2.5	2.5	2	SM	Fair	Fair	-	No immediate works required	40+	28.3	3.0	C1
T265	Common lime	4	1	150	1.5	1.5	1.5	1.5	0	Y	Fair	Fair	-	No immediate works required	40+	10.2	1.8	C1
T266	Silver birch	8	1	130	1.5	1.5	1.5	1.5	0	Y	Fair	Fair	-	No immediate works required	40+	7.6	1.6	C1
T267	Pedunculate oak	6.5	1	180	2	2	2	2	0	Y	Fair	Fair	-	No immediate works required	40+	14.7	2.2	C1
T268	Common alder	10	1	300	2.5	2.5	2.5	2.5	2	EM	Fair	Fair	Moderate bark damage at 4m to south	Assess hazard risk	40+	40.7	3.6	C1
T269	Common alder	11	1	280	2	2	2	2	2	SM	Fair	Fair	-	No immediate works required	40+	35.5	3.4	C1
T270	Common alder	13	1	400	4.5	4.5	4.5	4.5	2	EM	Good	Good	-	No immediate works required	40+	72.4	4.8	B1
T271	Common alder	10	1	400	4.5	4	3.5	4	2	EM	Fair	Fair	-	No immediate works required	40+	72.4	4.8	C1
T272	Common alder	11	1	380	3	3	3	3	2	EM	Fair	Fair	-	No immediate works required	40+	65.3	4.6	C1
T273	Common alder	10	1	350	1.5	1.5	1.5	1.5	2	SM	Fair	Fair	-	No immediate works required	40+	55.4	4.2	C1
T274	Common alder	11	2	350/ 150	3	3	3	3	2.5	EM	Fair	Fair	-	No immediate works required	40+	65.6	4.6	C1
T275	Common alder	13	2	400/ 200	4.5	4.5	4.5	4.5	3	EM	Fair	Good	-	No immediate works required	40+	90.5	5.4	B2
T276	Common alder	12	2	350/ 100	2	2	2	2	2	EM	Fair	Fair	-	No immediate works required	40+	59.9	4.4	C1
T277	Common ash	11	2	250/ 100	2.5	2	2	2.5	2	SM	Fair	Fair	-	No immediate works required	40+	32.8	3.2	C1

Table 1: Schedule of Trees and Tree Quality Assessment\*

No	Species	Ht.	S	St. 1.5m	Canopy Spread				Cr.Cl	Ls	SC	PC	Comments /Observation	Preliminary Management Advice	LE	RPA	RPA <sup>m2</sup>	Cat**
					N	S	E	W										
T278	Common alder	11	1	300	2.5	2.5	2.5	2.5	2	EM	Fair	Fair	-	No immediate works required	40+	40.7	3.6	C1
T279	Common alder	12	2	400/ 200	4	4	4	4	2	EM	Fair	Fair	-	No immediate works required	40+	90.5	5.4	B1
T280	Common alder	12	1	288	2.5	2.5	2.5	2.5	2	EM	Fair	Fair	-	No immediate works required	40+	37.5	3.5	C1
T281	Common alder	13	1	380	3	3	3	3	3	EM	Good	Fair	-	No immediate works required	40+	65.3	4.6	B1
T282	Common walnut	12	5	400/ 240/ 200/ 200/ 180	5	5	5	5	3.5	EM	Good	Good	On eastern side of drainage ditch	No immediate works required	40+	149.3	6.9	A1
T283	Common ash	12	2	450/45 0	5	5	7	7	2	EM	Fair	Fair	Access restricted	No immediate works required	40+	183.2	7.6	B1
T284	Silver birch	15	1	480	3	3	3	3	2.5	M	Fair	Good	-	No immediate works required	40+	104.2	5.8	B1
T285	Lombardy poplar	25	3	600/ 500/ 480	2.5	2.5	2.5	2.5	2.5	M	Fair	Fair	Ivy-clad at base inhibiting inspection		20-40	380.2	11.0	B1
T286	Black poplar	20	1	420	1.5	1.5	1.5	1.5	2.5	EM	Fair	Fair	-	No immediate works required	20-40	79.8	5.0	B1
T287	Lombardy poplar	20	2	420/ 420	1.5	1.5	1.5	1.5	2.5	EM	Fair	Fair	-	No immediate works required	20-40	159.6	7.1	B1
T288	Lombardy poplar	20	2	420/ 420	1.5	1.5	1.5	1.5	2.5	EM	Fair	Fair	-	No immediate works required	20-40	159.6	7.1	C1
T289	Lombardy poplar	23	1	680	1.5	1.5	1.5	1.5	4	M	Fair	Fair	Ivy-clad inhibiting inspection		20-40	209.2	8.2	B1
T290	Lombardy poplar	23	1	680	1.5	1.5	1.5	1.5	4	M	Fair	Fair	-	No immediate works required	20-40	209.2	8.2	B1
T291	Lombardy poplar	23	1	680	1.5	1.5	1.5	1.5	4	M	Fair	Fair	-	No immediate works required	20-40	209.2	8.2	B1
T292	Common hawthorn	10	1	170	2	2	2	2	3	EM	Fair	Fair	-	No immediate works required	20-40	13.1	2.0	C1



Table 1: Schedule of Trees and Tree Quality Assessment\*

No	Species	Ht.	S	St. 1.5m	Canopy Spread				Cr.Cl	Ls	SC	PC	Comments /Observation	Preliminary Management Advice	LE	RPA	RPA <sup>m2</sup>	Cat**
					N	S	E	W										
T293	Goat willow	14	1	750	7	7	7	7	4	M	Fair	Good	Access restricted, hazard beam crack on limb to south east at 3.5m	remove hazardous limb	40+	254.5	9.0	B1
T294	Common hawthorn	10	1	170	2	2	2	2	3	EM	Fair	Fair	-	No immediate works required	40+	13.1	2.0	C1
T295	Common ash	4.5	1	70	1	1	1	1	2	Y	Fair	Poor	-	No immediate works required	10_20	2.2	0.8	C1
T296	Lombardy poplar	25	1	850	1	1	1	1	4	M	Fair		Compression fork with noticeable reaction growth at 10m	Reduce or remove	20-40	326.9	10.2	B1
T297	Lombardy poplar	24	1	700	1	2	1	1	2	M	Fair	Fair	Ivy-clad inhibiting inspection	-	20-40	221.7	8.4	C1
T298	Spruce unknown	5	1	150	2	2	2	2	0.5	SM	Good	Good	-	No immediate works required	40+	10.2	1.8	C1
T299	European black pine	4	1	150	2	2	2	2	1.5	SM	Fair	Good	-	No immediate works required	40+	10.2	1.8	C1
T300	Common alder	8	1	400	2.5	2.5	2.5	2.5	2	EM	Fair	Fair	End of orchard row	No immediate works required	40+	72.4	4.8	C1
D1		0									Poor	Poor	Unidentifiable dead tree	Assess for removal	0-10	0.0	0.0	C1
D2		0									Poor	Fair	Unidentifiable covered in guelder rose	Assess for removal	0-10	0.0	0.0	C1
D3		0									Poor	Fair	Unidentifiable dead tree	Assess for removal	0-10	0.0	0.0	C1
G1	Crack willow, Goat willow	10	1	250	2	2	2	2	1	SM	Fair	Fair	-	No immediate works required	40+	28.3	3.0	C1
G2	Black poplar	18	1	650	3	3	6	6	5	M	Fair	Fair	Group of black poplar and crack willow marking the western edge of the woodland block	No immediate works required	40+	191.1	7.8	A2
G3	Black poplar, Crack willow	18	1	650	3	3	6	6	5	M	Fair	Fair	-	No immediate works required	40+	191.1	7.8	A2
G4	Black poplar	18	1	650	3	3	6	6	5	M	Fair	Fair	-	No immediate works required	40+	191.1	7.8	A2
G5	Crack willow	19	1	700	9	7	5	5	2	M	Fair	Fair	Group of crack willow forming northern border of woodland block	No immediate works required	40+	221.7	8.4	B1

Table 1: Schedule of Trees and Tree Quality Assessment\*

No	Species	Ht.	S	St. 1.5m	Canopy Spread				Cr.Cl	Ls	SC	PC	Comments /Observation	Preliminary Management Advice	LE	RPA	RPA <sup>m2</sup>	Cat**
					N	S	E	W										
G6	Black poplar	19	1	650	7	4	4	4	4	M	Fair	Good	Row of large black poplar trees spaced at 1m running along the northern edge of the woodland block	No immediate works required	40+	191.1	7.8	A2
G7	Common alder	12	1	250	1.5	1.5	1.5	1.5	1	SM	Fair	Fair	-	No immediate works required	40+	28.3	3.0	C1
G8	Common ash	16	4	350/ 350/ 310/ 290	6.5	6.5	6.5	6.5	5	EM	Fair	Fair	Ash group with field maple understory running along the south of ditch	No immediate works required	40+	192.4	7.8	B2
G9	Common hawthorn	6	3	150/150/100	3	3	3	3	0	SM	Fair	Fair	-	No immediate works required	40+	24.9	2.8	C1
G10	Common ash	15	3	400/ 400/ 380	6	6	6	6	0	EM	Fair	Fair	Ash group with hawthorn understory extending along the south of ditch	No immediate works required	40+	210.1	8.2	B1
G11	Common hawthorn	9	1	280	4	2	2	2	3	EM	Fair	Fair	Hawthorn hedge with ash standards to south of drainage ditch.	No immediate works required	40+	35.5	3.4	B2
G12	Common hawthorn	5	2	250/ 250	3.5	3.5	3	3		SM	Fair	Fair	-	No immediate works required	40+	56.5	4.2	C1
G13	Common hawthorn	5	2	250/ 250	3.5	3.5	3	3		SM	Fair	Fair	-	No immediate works required	40+	56.5	4.2	C1
G14	Common hawthorn	5	2	250/ 250	3.5	3.5	3	3		SM	Fair	Fair	-	No immediate works required	40+	56.5	4.2	C1
G15	Crack willow	15	1	550	6	6	6	6	4	EM	Fair	Fair	Group of 15 willows	No immediate works required	20-40	136.8	6.6	B1
G16	Common hawthorn	6	1	120	1	1	1	1	3	SM	Fair	Fair	South of public footpath	No immediate works required	40+	6.5	1.4	B2
G17	Common hawthorn	6	1	120	1	1	1	1	3	SM	Fair	Fair	Hawthorn hedge to north of footpath	No immediate works required	40+	6.5	1.4	B2
G18	European beech	7	12	80x12	2	2	3	3	0	Y	Fair	Fair	-	No immediate works required	40+	46.3	3.8	C1
G19	European beech	6	1	70	1	1	2	2	0	Y	Fair	Fair	-	No immediate works required	40+	2.2	0.8	C1
G20	Unconfirmed sp	10	1	300	3	3	3	3	0	EM	Fair	Fair	-	No immediate works required	40+	40.7	3.6	B2

Table 1: Schedule of Trees and Tree Quality Assessment\*

No	Species	Ht.	S	St. 1.5m	Canopy Spread				Cr.Cl	Ls	SC	PC	Comments /Observation	Preliminary Management Advice	LE	RPA	RPAm <sup>2</sup>	Cat**
					N	S	E	W										
G21	Crab apple	6	1	300	3	3	3	3	2	EM	Fair	Fair	Access restricted, situated in dense scrub	No immediate works required	40+	40.7	3.6	C1
G22	Crab apple	5	5	100/ 80x4	3	3	3	3	2	M	Good	Good	-	No immediate works required	40+	16.1	2.3	C1
G23	Crab apple	5	1	150	3	3	3	3	0.5	M	Fair	Good	One of several malus spp within overgrown orchard unable to access further	No immediate works required	40+	10.2	1.8	C2
G24	Norway spruce	12	1	165	3	3	3	3		SM	Fair	Good	-	No immediate works required	40+	12.3	2.0	B1
G25	Common plum	4	1	100	2	2	2	2		SM	Fair	Good	-	No immediate works required	40+	4.5	1.2	C1
G26	Unconfirmed sp	5	4	100x4	3	3	3	3		SM	Fair	Fair	Inaccessible position approximate 4 trees, 5m high typical 100 dia, 3m spread	No immediate works required	40+	18.1	2.4	C1
G27	Goat willow, Common ash	5	4	50x4	2	2	2	2		Y	Fair	Good	Group comprising 3 goat willow and 1 ash diameter 50 dia. and 2m spread	No immediate works required	40+	4.5	1.2	C1
G28	Common ash	6	2	50/50	2	2	2	2		Y	Fair	Good	Two young ash tree typical dia 50mm 1 multi stem, 2m spread 6m high	No immediate works required	40+	2.3	0.8	C1
G29	Goat Willow, Ash	8	8	75x8	2.5	2.5	2.5	2.5		EM	Good	Good	Mix of early mature goat willow and ash 8m high typical stem is 75mm dia spread 2.5m	No immediate works required	40+	20.4	2.5	C1
G30	Common ash, Common Hawthorn	4	1	50	3	3	3	3		Y	Fair	Good	Group comprising 6 trees- ash, hawthorn 3 to 4m high typically 50 diameter stems 3m spreads	No immediate works required	40+	1.1	0.6	C1
G31	Common plum	4	1	150	2	2	2	2		Y	Fair	Good	Hedge comprising mainly plum 4m high	No immediate works required	40+	10.2	1.8	C1
G32	Domestic apple	4	1	150	2	2	2	2		Y	Fair	Good	-	No immediate works required	40+	10.2	1.8	C1
G33	Silver birch	9.5	1	100	3	3	3	3		SM	Fair	Good	Group of 3 birch max 100mm dia, 9.5 high, 3m spread	No immediate works required	40+	4.5	1.2	C1
G34	Lawson's cypress, Silver birch, Cherry plum	12	2	200/ 200	2	2	2	2		SM	Fair	Good	Group comprising 17 trees mainly ornamental false cypress and birch and <i>Prunus pissardii</i> typically 200 dia stems 2m canopy spreads, 12m high, boundary screen value	No immediate works required	40+	36.2	3.4	B1
G35	Common plum	7	1	150	2	2	2	2		EM	Good	Good	Group comprising mainly false cypress and <i>Prunus pissardii</i> 13 trees typical stem 150mm dia 2m spread and 7m high	No immediate works required	40+	10.2	1.8	B1

Table 1: Schedule of Trees and Tree Quality Assessment\*

No	Species	Ht.	S	St. 1.5m	Canopy Spread				Cr.Cl	Ls	SC	PC	Comments /Observation	Preliminary Management Advice	LE	RPA	RPAm <sup>2</sup>	Cat**
					N	S	E	W										
G36	Unconfirmed sp	7	5	90x4/ 80	1	1	1	1	2	SM	Fair	Fair	-	No immediate works required	40+	17.6	2.4	C1
G40	Common hawthorn	8	2	250/ 200	2.5	2.5	2.5	2.5	1	EM	Fair	Fair	Access restricted	No immediate works required	40+	46.4	3.8	C1
G41	Common hawthorn	8	2	250/ 200	2.5	2.5	2.5	2.5	1	EM	Fair	Fair	Access restricted	No immediate works required	40+	46.4	3.8	C1
G42	Unconfirmed sp	8	12	70x12	4.5	4.5	4.5	4.5	0	Y	Fair	Fair	-	No immediate works required	40+	26.6	2.9	C1
G43	Common ash	10	1	300	2.5	2.5	2.5	2.5	1	SM	Fair	Fair	Inaccessible group comprising mainly ash and hawthorn	No immediate works required	40+	40.7	3.6	C1
G44	Common hawthorn	6.5	3	100/ 100/ 80	1.5	1.5	2	2	2	SM	Good	Fair	Hedge of hawthorn and elder between 6 and 8m in height	No immediate works required	40+	12.7	2.0	C1
G45	Common alder	12	1	400	3.5	3.5	3.5	3.5	3	EM	Good	Fair	-	No immediate works required	40+	72.4	4.8	B1
G46	Common alder	12	1	400	3.5	3.5	3.5	3.5	3	EM	Good	Fair	-	No immediate works required	40+	72.4	4.8	B1
G47	Common alder	6	1	100	1.5	1.5	1.5	1.5	2	SM	Fair	Fair	Boundary hedge	No immediate works required	40+	4.5	1.2	C1
G48	Common alder	6	1	100	1.5	1.5	1.5	1.5	2	SM	Fair	Fair	-	No immediate works required	40+	4.5	1.2	C1
G49	Common hawthorn, Common hazel, Common ash, Common alder, Lombardy poplar	18	1	500	2	5	3	3	2	EM	Fair	Fair	Group of hawthorn, hazel, ash and alder with large poplars scattered throughout, running along the boundary	No immediate works required	40+	113.1	6.0	B2
G50	Lombardy poplar	17	1	450	1.5	1.5	1.5	1.5	2	EM	Fair	Fair	Access restricted, estimated	No immediate works required	20-40	91.6	5.4	B2
G51	Common ash	12	2	150/ 150	2	2	3	3	1.5	SM	Fair	Fair	-	No immediate works required	40+	20.4	2.5	C1
G52	Silver birch	5	1	70	1	1	1	1	0	Y	Fair	Fair	-	No immediate works required	40+	2.2	0.8	C1
G53	Goat willow, Silver birch	13	3	200/ 100/ 80	2	2	2	2	2	SM	Fair	Fair	Group of silver birch and goat willow	No immediate works required	40+	25.5	2.8	C1

Table 1: Schedule of Trees and Tree Quality Assessment\*

No	Species	Ht.	S	St. 1.5m	Canopy Spread				Cr.Cl	Ls	SC	PC	Comments /Observation	Preliminary Management Advice	LE	RPA	RPA <sup>m2</sup>	Cat**
					N	S	E	W										
G54	Common ash, Goat willow, Silver birch	10	6	100	2	2	2	2	0	SM	Fair	Fair	Group of semi-mature trees, comprising ash, goat willow and silver birch	No immediate works required	40+	27.1	2.9	C1
G55	Common ash	10	1	250	2	2	2	2	1	SM	Fair	Fair	Group of ash, goat willow and silver birch	No immediate works required	40+	28.3	3.0	C1
G56	Lombardy poplar	18	1	450	1.5	1.5	1.5	1.5	2	EM	Fair	Fair	-	No immediate works required	40+	91.6	5.4	B2
G57	Lombardy poplar	25	1	850	1.5	1.5	1.5	1.5	2	M	Fair	Fair	Large windbreak separating private gardens. Access restricted, trees are of excessive size for their location in cramped domestic setting	Detailed inspection/reduction	20-40	326.9	10.2	B1
G58	Lawson's cypress, Common ash, Common hawthorn, Goat willow, Common blackthorn	5	1	200	1	1	1	1	0	SM	Fair	Fair	Group of mixed trees and scrub including hawthorn, blackthorn, ash, goat willow and leylandii	No immediate works required	40+	18.1	2.4	C1
G59	Common hawthorn, Common hazel, Domestic apple	6	1	200	1.5	1.5	1.5	1.5	0	SM	Fair	Fair	Hedge consisting mainly of apple, hazel and hawthorn	No immediate works required	40+	18.1	2.4	C1
G60	Common ash, Common hazel, European hornbeam, goat willow	10	1	200	3	3	3	3	1	SM	Fair	Fair	Group of mixed deciduous trees including hornbeam, ash, hazel, goat willow,	No immediate works required	40+	18.1	2.4	C1
G61	Lombardy Poplar	21	1	400	4	4	4	4		M	Fair	Fair	-	No immediate works required	40+	72.4	4.8	B1
G62	Common plum	4	4	250x4	3	3	3	3		EM	Fair	Fair	Group in scrub, inaccessible	No immediate works required	40+	113.1	6.0	C1
G63	Crab apple	4	4	250x4	3	3	3	3	0.5	M	Fair	Fair	-	No immediate works required	40+	113.1	6.0	C1
G64	Common ash, Goat willow, Silver birch	12	5	200x5	3	3	3	3	0	EM	Fair	Fair	-	No immediate works required	40+	90.5	5.4	C1
G65	Common alder, Common ash, Goat willow, Silver birch	10	3	150/ 150/ 100	2.5	2.5	2.5	2.5	0.5	SM	Fair	Fair	-	No immediate works required	40+	24.9	2.8	C1
G66	Common ash,	2	3	70x3	1	1	1	1	0	Y	Fair	Fair	Hedgerow comprising hawthorn, elder, ash	No immediate works required	40+	6.7	1.5	C1
G67	Lombardy poplar	29	1	500	3	3	3	3	1	M	Fair	Good	Landmark group visible for considerable distance in all directions, stem range up to 500mm, height 29m and	No immediate works required	20-40	113.1	6.0	A2

Table 1: Schedule of Trees and Tree Quality Assessment\*

No	Species	Ht.	S	St. 1.5m	Canopy Spread				Cr.Cl	Ls	SC	PC	Comments /Observation	Preliminary Management Advice	LE	RPA	RPAm <sup>2</sup>	Cat**
					N	S	E	W										
												spread 3m. approx 1m spacing , number 107 trees within group.						
G68	Lawson's Cypress	8	1	275	2	2	2	2	1	SM	Fair	Fair	-	No immediate works required	40+	34.2	3.3	C1
G69	Silver Birch	15	3	300x3	5	5	5	5	1	M	Fair	Fair	-	No immediate works required	40+	122.1	6.2	C1
O1	Domestic apple	2											Orchard block. 2.5m high, historic apple coppice, 250dbh, 5m spacing between rows, 4m between trees.	No immediate works required	40+	0.0	0.0	-
O2	Domestic apple	2.5											Orchard block, same stats as block to south	No immediate works required	40+	0.0	0.0	-
O3	Domestic apple	2.5											Pleached orchard block, 1m between trees, 3m between rows, 2.5m high, 40dbh	No immediate works required	40+	0.0	0.0	-
O4	Domestic apple	2.5											Young orchard block, spacing between rows, 2.5m, spacing between trees 1m	No immediate works required	40+	0.0	0.0	-
O5	Domestic apple	2.5											Orchard block, 5m between rows, 2.5m between trees	No immediate works required	40+	0.0	0.0	-
O6	Domestic apple	2.5											Pleached orchard rows, 2.5m high, 3m between rows	No immediate works required	40+	0.0	0.0	-
O7	Domestic apple	2.5											Orchard block, 3m tall, 5m between rows, 2.5m between trees	No immediate works required	40+	0.0	0.0	-
O8	Domestic apple	2.5											Orchard block, 2m high, spread 1m 2m between trees 4m between rows	No immediate works required	40+	0.0	0.0	-
O9	Domestic apple	2.5											Orchard block, 2m high, spread 1m 2m between trees 4m between rows	No immediate works required	40+	0.0	0.0	-
O10	Domestic apple	2.5											Orchard block, 2.5 high, 1.5m spacing between trees, 4m between rows, 1m spread, 70dbh	No immediate works required	40+	0.0	0.0	-
S1		0											Large area of scrubland containing only minor scattered trees of low visual public amenity assumed all trees cat c due to inaccessibility	No immediate works required	40+	0.0	0.0	C1
S2		0											Large area of scrubland containing only minor scattered trees of low visual public amenity assumed all trees cat c due to inaccessibility	No immediate works required	40+	0.0	0.0	C1
S3		0								SM	Fair	Fair	Large area of scrubland consisting mainly of tall brambles but containing scattered trees of varying species including oak, hawthorn, beech, ash, silver birch, blackthorn, plum, apple and goat willow. due to	No immediate works required	40+	0.0	0.0	C1

Table 1: Schedule of Trees and Tree Quality Assessment\*

No	Species	Ht.	S	St. 1.5m	Canopy Spread				Cr.Cl	Ls	SC	PC	Comments /Observation	Preliminary Management Advice	LE	RPA	RPAm <sup>2</sup>	Cat**
					N	S	E	W										
													the general inaccessibility and lack of significantly visible, mature trees, any trees situated in this area would be assigned cat c status					
S4		0											Scrub area dense, inaccessible	No immediate works required	40+	0.0	0.0	C1
W1	Norway spruce, Silver birch	0								EM	Fair	Fair	Dense wood	No immediate works required	40+	0.0	0.0	C1
W2	Norway spruce, Silver birch	0								EM	Fair	Fair	Dense plantation wood	No immediate works required	40+	0.0	0.0	B1
W3	Crack willow, Goat willow, Common hawthorn, Common blackthorn, Domestic apple, Common ash, Common alder	10								SM	Fair	Fair	Woodland block consisting mainly of willows, hawthorn and blackthorn to east and young stands of ash and alder to west, scattered apple trees to the south. average height of 10m	No immediate works required	40+	0.0	0.0	B2
W4	Black poplar, field maple, Common ash, Pedunculate oak, Common hawthorn, Common alder	19	1	800	5	5	5	5	1	M	Fair	Good	Homogeneous woodland block consisting of mature black poplar with understory consisting of mainly field maple but also containing ash, oak, hawthorn and alder	No immediate works required	40+	289.5	9.6	A2

\* See Table 3 for key to terms

\*\* See Table 2 for definitions of categories



**Table 2: BS: 5837 2012 Tree Quality Assessment Definitions**

TREES FOR REMOVAL		
Category & Definition	Criteria	Identification on Plan
<p><b>Category U</b> Those in such a condition that they cannot realistically be retained as a living trees in the context of the current land use for longer than 10 years.</p>	<ul style="list-style-type: none"> <li>• Trees that have a serious, irremediable structural defect such that their early loss is expected due to collapse, including those that will become unviable after removal of other U category trees (i.e. Where for whatever reason the loss of companion shelter cannot be mitigated by pruning)</li> <li>• Trees that are dead or are showing signs of significant immediate or irreversible overall decline.</li> <li>• Trees infected with pathogens of significance to the health and or safety of other trees nearby by or very low quality trees suppressing adjacent trees of better quality.</li> </ul>	RED

TREES TO BE CONSIDERED FOR RETENTION					
Category Identification	&	1 Mainly arboricultural values	2 Mainly landscape values	3 Mainly cultural values including conservation	Identification on plan
<p><b>Category A</b> Trees of High Quality with an estimated remaining life expectancy of at least 40 years</p>		Trees that are a particularly good example of their species, especially if rare or unusual, or essential components of groups or of formal or semi-formal arboricultural features e.g. the dominant and/or principal trees in an avenue)	Tree groups or woodlands of particular visual importance as arboricultural and/or landscape features.	Tree groups or woodlands of significant conservation historical , commemorative or other value (e.g. veteran trees or wood pasture)	GREEN
<p><b>Category B</b> Trees of moderate quality with an estimated remaining life expectancy of at least 20 years.</p>		Trees that might be included in the high category but are downgraded because of impaired condition (e.g. presence of remediable defects including unsympathetic past management and minor storm damage).	Trees present in numbers, usually as groups or woodlands such that they attract a higher collective rating than they might as individuals : or trees occurring as collectives but situated so as to make little visual contribution to the wider locality.	Trees with material conservation or other cultural benefits.	BLUE



TREES TO BE CONSIDERED FOR RETENTION

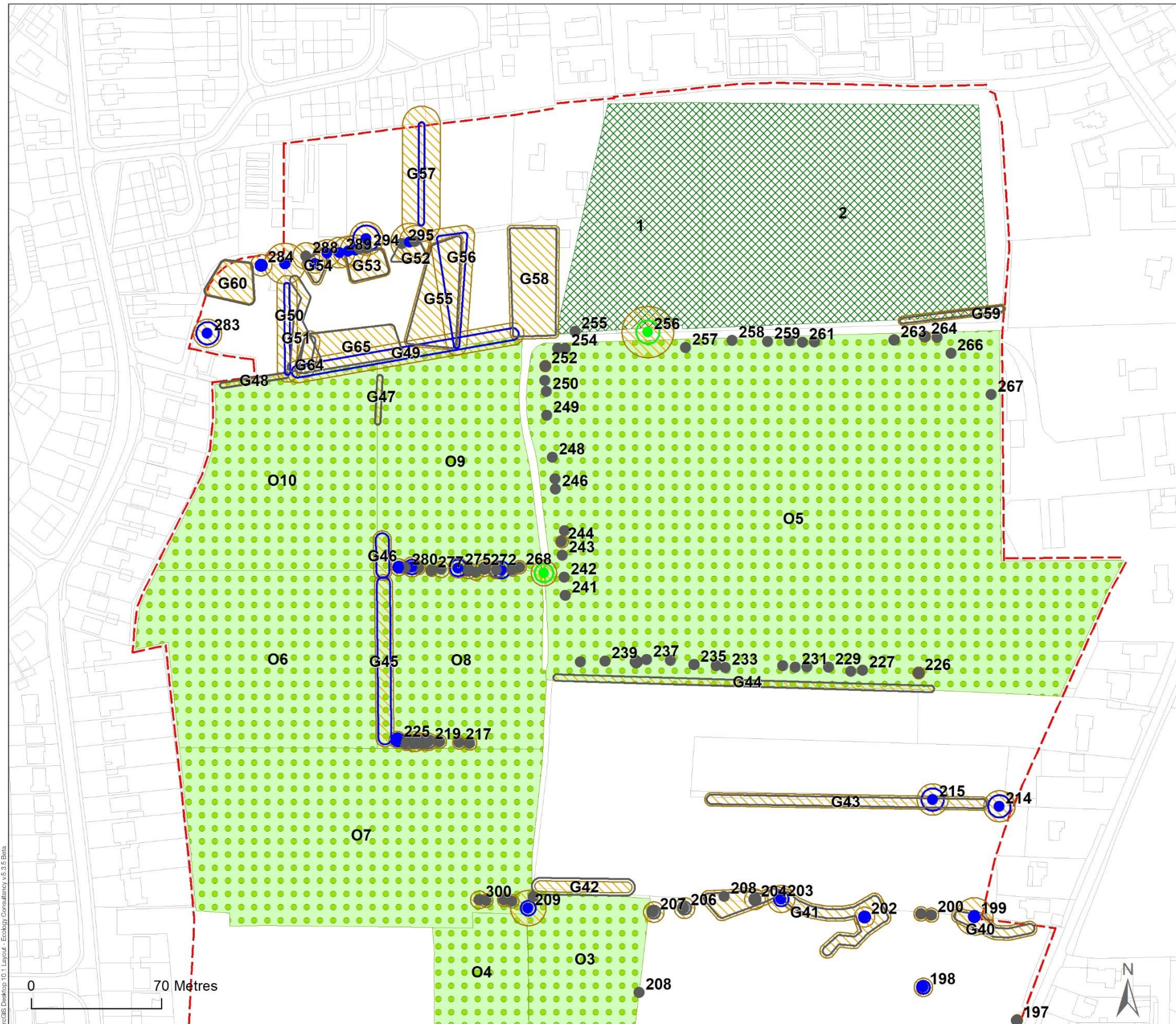
Category Identification &	1 Mainly arboricultural values	2 Mainly landscape values	3 Mainly cultural values including conservation	Identification on plan
<p><b>Category C</b> Trees of a low quality with an estimated remaining life expectancy of at least 10 years or young trees with a stem diameter below 150mm</p>	<p>Unremarkable trees of very limited merit or such impaired condition that they do not qualify in higher categories.</p>	<p>Trees present in groups or woodlands but without this conferring on them significantly greater landscape value and/or trees offering low or only temporary/transient landscape benefits.</p>	<p>Trees with no material conservation or other cultural benefits.</p>	<p>GREY</p>

**Table 3: Key Schedule of Trees**

Column Heading	Explanation
<b>Tree No</b>	Sequential number corresponding to number on plan.
<b>Species</b>	English names.
<b>Ht.</b>	Height in metres.
<b>S</b>	Number of main stems.
<b>St. 1.5 (Stem Diameter)</b>	Stem diameter when measured in accordance with Annex C of BS 5837:2012.
<b>NSEW</b>	Crown radius in metres to cardinal points of the compass.
<b>Cr. Cl. (Crown Clearance)</b>	Height in metres between the ground and underside of canopy.
<b>Ls.</b>	Life stage definitions. Y= Young. S = Semi-mature. E = Early-mature. M = Mature. O = Over-mature.
<b>SC</b>	Brief description of structural condition.
<b>PC</b>	Brief description of physiological condition.
<b>Preliminary Advice</b>	Preliminary tree works advice and recommendations.
<b>LE</b>	Estimated remaining useful life contribution in years. <10, 10+, 20+ and 40+ yr.
<b>Cat. (Category)</b>	<p>Categorisation grading in accordance with BS 5837 2012.</p> <p>Trees suitable for retention: - Category A trees of high quality and amenity value. Category B trees of moderate quality and amenity value. Category C trees of low quality or amenity value.</p> <p>British Standards BS 5837:2012 recommends that these categories may be further broken down into sub-categories A1 A2 A3 pertaining to Arboricultural, Landscape or Cultural values respectively.</p>
<b>RPA m<sup>2</sup></b>	Root Protection Area (RPA). Indicative area around a tree measured in m <sup>2</sup> and calculated in accordance with Annex C of BS 5837:2012 deemed to contain sufficient rooting volume to maintain the viability of a tree and where the protection of roots and soil structure is treated as a priority.
<b>RPA r</b>	Root Protection Area (RPA) radius calculation centred on the base of the tree and calculated in accordance with Annex C of BS 5837:2012

## Appendix 2: Tree Constraints Plans





Job title  
**East Wisbech Urban Extension**  
 TEC Job no. 6062.1

Client  
**Fenland District Council**

Drawing title  
**TREE CONSTRAINTS PLAN**

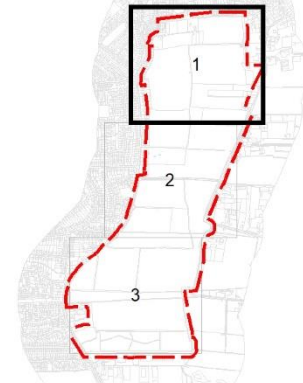
Section: N/A      Scale (at A3) 1:2,000

Date of survey 31/07/2017 & 11/08/2017

Surveyor MC, JP

Drawn JD      Checked JP

Approved MC      Date 08-Sep-17



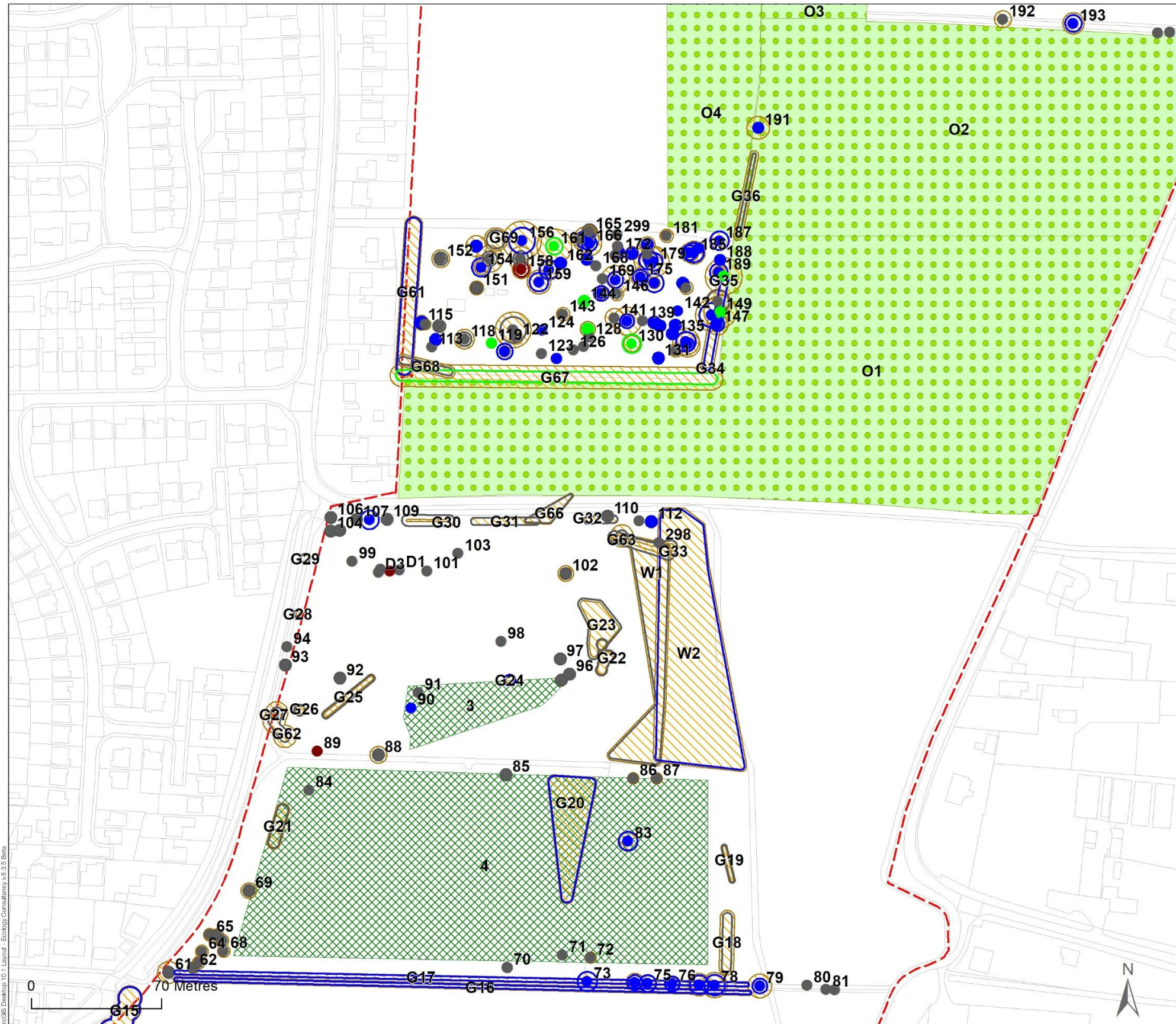
**KEY**

- Site boundary
- Crown spread of category U - Trees with significant overall decline
- Crown spread of category A - Trees with high quality and value
- Crown spread of category B - Trees with moderate quality and value
- Crown spread of category C - Trees with low quality and value
- Root Protection Area (RPA)
- Orchard
- Scrub

ArcGIS Desktop 10.1 Layout - Ecology Consultancy v5.5.5 Beta

0 70 Metres





Job title  
**East Wisbech Urban Extension**  
 TEC Job no. 6062.1

Client  
**Fenland District Council**

Drawing title  
**TREE CONSTRAINTS PLAN**

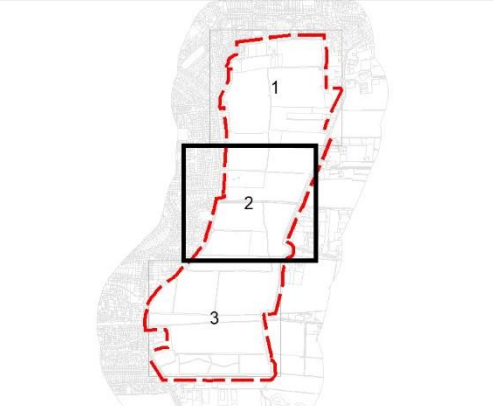
Section: N/A      Scale (at A3) 1:2,000

Date of survey 31/07/2017 & 11/08/2017

Surveyor MC, JP

Drawn JD      Checked JP

Approved MC      Date 08-Sep-17

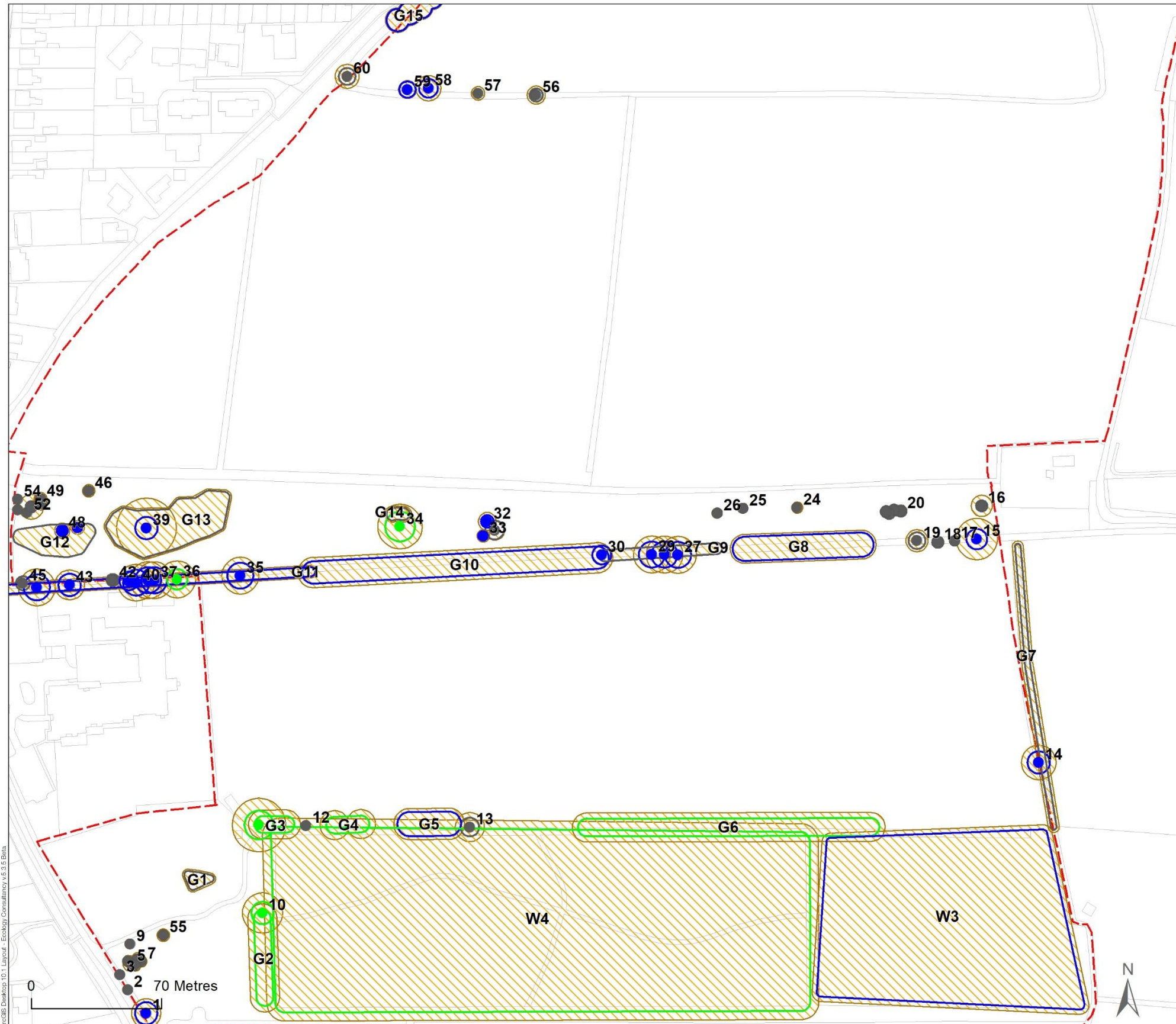


**KEY**

- Site boundary
- Crown spread of category U - Trees with significant overall decline
- Crown spread of category A - Trees with high quality and value
- Crown spread of category B - Trees with moderate quality and value
- Crown spread of category C - Trees with low quality and value
- Root Protection Area (RPA)
- Orchard
- Scrub

ArcGIS Desktop 10.1 Layout - Ecology Consultancy v5.3.5.8 Data  
 This plan is provided solely for the purpose of supporting the description of the ecological features of the site as contained in the accompanying report





Job title  
**East Wisbech Urban Extension**  
 TEC Job no. 6062.1

Client  
**Fenland District Council**

Drawing title  
**TREE CONSTRAINTS PLAN**

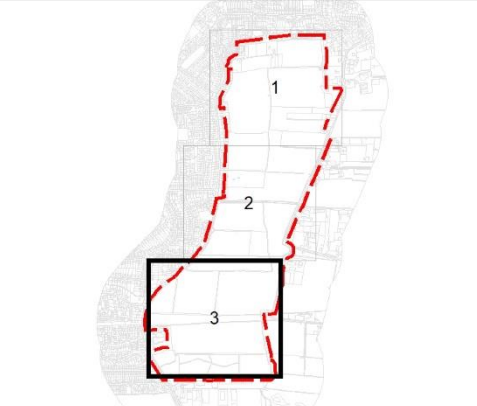
Section: N/A      Scale (at A3) 1:2,000

Date of survey 31/07/2017 & 11/08/2017

Surveyor MC, JP

Drawn JD      Checked JP

Approved MC      Date 08-Sep-17



- KEY**
- Site boundary
  - Crown spread of category U - Trees with significant overall decline
  - Crown spread of category A - Trees with high quality and value
  - Crown spread of category B - Trees with moderate quality and value
  - Crown spread of category C - Trees with low quality and value
  - Root Protection Area (RPA)
  - Orchard
  - Scrub

ArcGIS Desktop 10.1 Layout - Ecology Consultancy v5.3.3.8 Data

This plan is provided solely for the purpose of supporting the description of the ecological features of the site as contained in the accompanying report

## Appendix 3: Glossary of Terms

## Glossary of Terms

Term	Explanation
<b>Arboricultural Impact Assessment (AIA)</b>	Evaluation of direct and indirect effects of a proposed design and/or construction.
<b>Arboricultural Method Statement (AMS)</b>	Methodology for the implementation of any aspect of development that is in the root protection area or has the potential to result in the loss of or damage to a tree to be retained.
<b>Branch structure</b>	Qualitative description of formation of main framework of limbs and branches.
<b>Canopy face</b>	Orientation of canopy relative to cardinal points of the compass
<b>Canopy radius</b>	A measurement taken from the centre of a tree to the furthest radial extension of tree canopy relative to the cardinal points of the compass.
<b>Competent Person</b>	Person who has training and experience relevant to the matter being addressed and an understanding of the requirements of the particular task being approached.
<b>Conservation Area</b>	Local Planning Authority special designation generally prohibiting tree works without 6 weeks prior written notification.
<b>Construction Exclusion Zone (CEZ)</b>	Area based upon the calculated root protection area prohibiting access.
<b>Cavity</b>	Open and exposed aperture where wood tissue has internally degraded.
<b>Constraints check</b>	Formal search of local authority records to determine legal and statutory constraints on tree works.
<b>Crown lifting</b>	Removal of lower branches to achieve a stated vertical clearance above ground level or other surface.
<b>Crown reduction</b>	Pruning of a trees canopy in both height and width.
<b>Decay</b>	Deterioration and breakdown of tree wood fibres resulting in structural and/or physiological dysfunction of a tree.
<b>Dieback</b>	Continual decline and death of wood tissue including twigs and branches.
<b>Failure</b>	Description of structural failure or wood fibres including fracture of branches, limbs and main stems.
<b>Fork</b>	Area or point of union between one or more limbs or branches.
<b>Hazard Risk Assessment</b>	Qualitative and quantitative appraisal of the potential for tree failure and the possible risk of harm or damage to persons or property.
<b>Local Planning Authority</b>	Body responsible for the administration of Statutory duties relating to Development Management.
<b>Multi-stem</b>	A single tree formed from 2 or more codominant main stems
<b>Occlusion</b>	Wood development enclosing an extant wound or pruning cut.
<b>Pruning</b>	The targeted removal of branches or limbs using saws or other tools.
<b>Physiological Condition</b>	Observation relating to a trees physiology for example vigour, leaf area, growth rate, the presence of pests or disease.



## Glossary of Terms

Term	Explanation
<b>Root Protection Area</b>	Root Protection Area (RPA). Indicative area around a tree deemed to contain sufficient rooting volume to maintain the viability of a tree.
<b>Shelter belt</b>	A wind break normally made up of one or more trees planted in such a way to provide cover from the wind.
<b>Structural Condition</b>	Observation relating to a trees structural integrity and the presence of any physical defects.
<b>Suppressed</b>	Where a trees development has been influenced or effected by the presence of competing vegetation.
<b>Tree Constraints Plan</b>	A scaled plan indicating above and below ground constraints relating to the protection of trees
<b>Tree Preservation Order</b>	A legal order made by the local planning authority protecting specific trees in the interests of amenity.
<b>Visual Tree Assessment (VTA)</b>	A method of assessment based upon the research developed to recognise dynamic responses of a tree to its surroundings.

## Appendix 4: Photographs

**Photograph 1**

View from Sandy Lane looking southwest towards Hall Field



**Photograph 2**

View looking west along Sandy Lane.



**Photograph 3**

View looking east along track way with Woodland W1 to the left of the picture..



**Photograph 4**

View looking north towards T185  
(left of the picture)



**Photograph 5**

View looking east along Green  
Drove.



**Photograph 6**

View looking east along Green  
Drove





**Photograph 7**

View looking southeast towards  
Woodland W4



**Photograph 8**

View looking east along Green  
Drove with group G10 to the left of  
the picture .



**Photograph 9**

View looking east along northern  
boundary of W4



**Photograph 10**

View looking northeast towards Green Drove and group G10.



**Photograph 11**

View looking northeast towards Hall Field and group G16



**Photograph 12**

View looking east from junction of Orchard Drive and Stow Lane towards groups G16 and G17





**Photograph 14**

View looking northeast from Stow Lane towards G67.



**Photograph 15**

View looking northeast from Green Drove towards G13.





## Ecology Consultancy

The Ecology Consultancy is part of the Temple Group.

### **Making places better for people and wildlife**

**London** - Tempus Wharf, 33a Bermondsey Wall West, London, SE16 4TQ  
T. 020 7378 1914 W. [www.ecologyconsultancy.co.uk](http://www.ecologyconsultancy.co.uk) E. [enquiries@ecologyconsultancy.co.uk](mailto:enquiries@ecologyconsultancy.co.uk)

■ **Sussex** - The Old Dairy, Barcombe Mills Road, Lewes, East Sussex BN8 5FF T. 01273 813739

■ **East Anglia** - Thorpe House, 79 Thorpe Road, Norwich NR1 1UA T. 01603 628408

■ **Midlands** - 9 The Mews, Trent Park, Eastern Avenue, Lichfield WS13 6RN T. 01543 728971

■ **North** - Trinity Walk, Unit G37b, Market Walk, Wakefield, West Yorkshire WF1 1QR T. 01924 683558

■ **Scotland** - 3 Coates Place, Edinburgh Scotland EH3 7AA T. 0131 225 8610