



PORT OF WISBECH AUTHORITY PILOTAGE DIRECTIONS

Issue 3 February 2018

In accordance with:

Pilotage act, 1987; Pilotage direction under section 7

Port of Wisbech (Pilotage) Harbour Revision Order, 1988 section 3

TAKE NOTICE that the provisions for compulsory pilotage applicable within the limits of the Port of Wisbech apply to the following area of The Wash adjoining the defined port area:

- (a) a line drawn due north (true) from a point on the coast of Norfolk at latitude $52^{\circ}48'.32N$, longitude $0^{\circ}20'.0E$ to a point at latitude $52^{\circ}55'.24N$, longitude $0^{\circ}20'.0E$;
- (b) a line drawn thence west to a point at latitude $52^{\circ}55'.24N$, longitude $0^{\circ}09'.23E$;
- (c) a line drawn thence in a southerly direction to a point on the coast of Lincolnshire at latitude $52^{\circ}52'.60N$, longitude $0^{\circ}09'.30E$;

together with all navigable rivers, canals and cuts downstream of Wisbech Bridge running unto the waters of The Wash within the above mentioned limits, and including all tidal and closed docks within such limits but excluding any waters within the limits of compulsory pilotage of King's Lynn Conservancy Board and Port of Boston. *

The following vessels are exempt from compulsory pilotage:

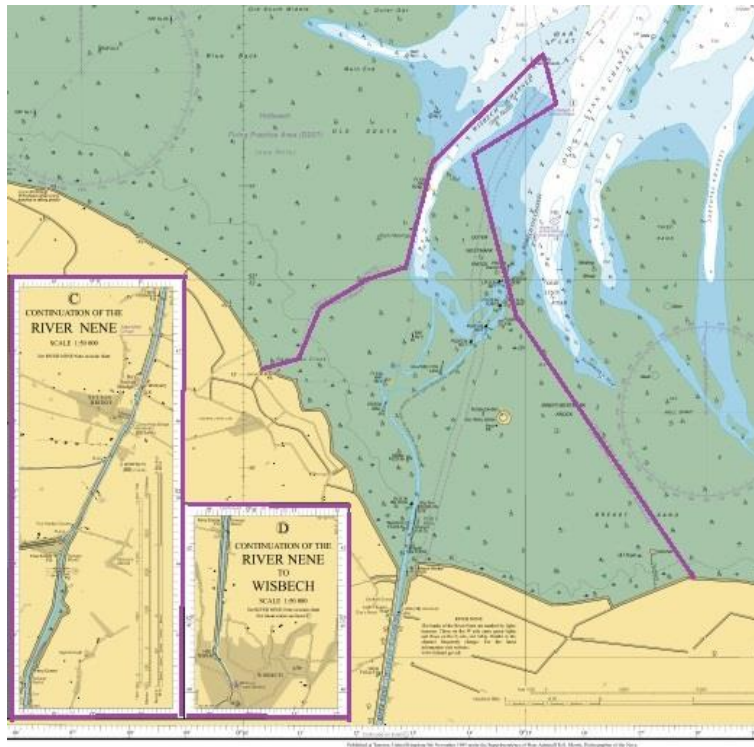
- (a) ships and pleasure vessels of less than 20 meters in length;
- (b) fishing vessels of less than 47.5 meters in length

Pilot Boarding Areas:

Outer station - latitude $52^{\circ}53'.877N$, longitude $000^{\circ}15'.824E$

Inner bad weather station – latitude $52^{\circ}52'.456N$, longitude $000^{\circ}15'.161E$

LIMIT OF PORT OF WISBECH AUTHORITY AREA OF JURISDICTION



*LIMIT OF PORT OF WISBECH AUTHORITY COMPUSORY PILOTAGE AREA (Red line)
Memorandum of Agreement (MoA) with KLCB Appendix 5

