

Fenland Community Safety Partnership Newsletter

**Welcome to the 18th Edition of the Fenland
Community Safety Partnership (FCSP) Newsletter**

Follow us on Twitter @FenlandCSP

This newsletter provides an update on the partnership activity of the Fenland CSP.

Community Safety Partnerships (CSPs) are made up of representatives from the police, local authorities, fire and rescue services, health, and probation services. They are known as 'responsible authorities'. Other non-statutory bodies are also invited to be members e.g., residential social landlords.

CSP members work in partnership to tackle crime and anti-social behaviour and to reduce the communities fear of crime and anti-social behaviour.

The CSP page has resources to provide help and support on a wide range of topics, such as Scams, County Lines (drugs) and Hate Crime. Visit our CSP page by following this link:

<https://www.fenland.gov.uk/csp>



**Edition 18
January 2025**

INSIDE THIS ISSUE

- 2-3 Community Safety Events
- 4-13 Focus on Domestic Abuse
- 14- Cambs Fire & Rescue
- 15 - Speedwatch
- 16- Cambs Police
- 17-18 Bulky Waste Collections
- 19 - Useful Information

FENLAND COMMUNITY SAFETY PARTNERSHIP (FCSP) ENGAGEMENT EVENTS

Community Safety Engagement events are held across Fenland each quarter to raise awareness of key safety messages.

Community engagement events are supported by a range of partners including: Police, Neighbourhood Watch, Bobby Scheme, Cambridgeshire Fire and Rescue, Speed Watch and the Illegal Money Lending Team.

Cambridgeshire and Peterborough against Scams Partnership, Cybercrime and Online

Fraud Officers.

Cambridgeshire & Peterborough Domestic Abuse and Sexual Violence Partnership, and the Cambridgeshire & Peterborough Road Safety Partnership.

At these events residents can also speak to a Fenland Community Safety Officer to discuss concerns about crime or anti-social behaviour that affect their community.

CELEBRATING FENLAND COMMUNITY ENGAGEMENTS IN 2024

Looking back on 2024, thank you to the warm welcome we have received from the community organisations and local businesses we have visited this year.

The Fenland Community Safety Partnership would also like to thank our partner agencies for supporting the Community Safety Engagement events and for inviting community safety to take part in the events you've arranged.



PARSON DOVE



WHITTLESEY



WHITTLESEY PATROLS



WISBECH PATROLS



2024/2025 COMMUNITY SAFETY ENGAGEMENT EVENTS IN FENLAND

Fenland Community Safety Partnership will be delivering further community engagement events throughout 2024 and 2025.

MURROW BOOK CAFE



COATES VILLAGE HALL



These will be advertised on the FDC website, partnership pages and in your local area.

Come along and meet the Community Safety Partnership for Information and advice on a wide range of community safety matters.

WISBECH OASIS CENTRE



WALSOKEN VILLAGE HALL



The sound of their key in the lock...

Do you feel safe in your own home?

Call **0300 3731073** to speak to someone

If you are in danger ring **999**

Find out more online at impakt.org.uk/dass



DOMESTIC ABUSE & COERCIVE CONTROL

What is Domestic Abuse & Violence?



Domestic abuse can include:

mocking, humiliation, insults and criticism,
being checked up on, stalked or followed,
pressure, threats, intimidation or violence,
destruction of possessions,
isolation from family and friends,
having money taken or controlled or not being allowed to work
lying, blame and denial of the abuse
being forced into sex

If you are worried about a friend or family member who may be experiencing domestic abuse, there are organisations that can offer help and support

For more information on the signs of domestic abuse please visit
www.cambsdasv.org.uk

Local support

DASS Domestic Abuse Support Service 0300 373 1073 / email DASSreferrals@impakt.org.uk
Cambridge Rape Crisis Centre 01223 245888
Peterborough Rape Crisis Centre 01733 511250 www.caprccp.org.uk
The Elms Sexual Assault Referral Centre 0800 193 5434 www.theelmssarc.org
Cambridgeshire and Peterborough Victim and Witness Hub 0800 781 6818

National support

National Domestic Abuse Helpline 0808 2000 247
Galop (LGBT+ support) 0800 999 5428 www.galop.org.uk
Karma Nirvana (forced marriage and HBV) 0800 5999 247 www.karmanirvana.org.uk
Men's Advice Line 0808 801 327 www.mensadvice.org.uk
Hourglass (older people) 0808 808 8141 wearehourglass.org

**If someone is in immediate danger,
always call 999**



**Cambridgeshire
& Peterborough**
Domestic Abuse & Sexual
Violence Partnership

www.cambsdasv.org.uk

Myths About Domestic Abuse

Domestic abuse only happens to women

The majority of victims of domestic abuse are women, but it can happen to men in both heterosexual and same sex relationships. Domestic abuse is also experienced by people who identify as transgender or non-gender.

Why doesn't she just leave?

Statistically, the most dangerous time for a female victim of domestic abuse is when she leaves her abuser – she is most likely to be murdered by him at this point.

There are also other significant issues to consider – leaving could mean giving up her job, losing contact with friends and family, if there are children they may have to change schools and leave their friends behind.

Alcohol and drugs cause domestic violence

Whilst there are links between people who have alcohol issues or who take drugs and domestic abuse, there is no evidence that alcohol or drugs cause domestic abuse. Domestic abuse is about having power and control over someone, whilst taking drugs or misusing alcohol may affect people in different ways, they do not make people become an abuser.

Domestic abuse only happens to people who live in bad areas

Anyone can be a victim of domestic abuse. It doesn't matter where you live, whether you have a job or not, how much money you earn, what your gender or sexual orientation is. People of all backgrounds, cultures and religions can experience domestic abuse.

If someone experiences violence as a child, they will grow up to be an abuser

It is acknowledged that children growing up in a violent home are affected in a number of ways and some children who experience abuse do go on to be abusive in their relationships. But this does not apply to everyone. Many people are repelled by violence because of what they witnessed as a child and the damage it causes. Using violence or controlling behaviour is a choice that abusers make.

The police don't respond to calls about a 'domestic'

Domestic violence is taken very seriously by the police. Officers receive training in how to respond to calls about domestic abuse and what they should do when arriving at the scene. Many forms of domestic abuse are a crime and the police can pursue a crime even without the consent of the victim.

S/he brings it on himself/herself

The victim is NEVER to blame for domestic abuse. There is no excuse for violent and abusive behaviour.

Domestic violence is a private matter, you shouldn't interfere in a marriage

Some people think that what goes on in the home is private, and they shouldn't get involved. This view is outdated and harmful. Domestic abuse can affect anyone and we all have a responsibility to speak out.



Domestic violence is a crime. It is against the law.

IMPAKTAbout | make an:IMPAKT | IMPAKTHousing | IMPAKTDomestic Abuse | IMPAKTFood | IMPAKTShops | Donate

DASS

Domestic Abuse Support Service
Peterborough, Fenland, Huntingdon, East Cambs, Cambridge City and South Cambs

The Domestic Abuse Support Service (DASS) works to understand the needs and wishes of the individual and develop appropriate support and safety plans. We offer help with issues around home security where appropriate, accessing benefits and signposting or referral to specialist services. DASS also offer drop-in services in partnership with other specialist services across the county.



Please contact Domestic Abuse Support Service (DASS) if you live anywhere in Cambridgeshire or Peterborough and would like advice or support.

DASS supports victims and survivors of domestic abuse of any gender identity and any sexual orientation.

Telephone 0300 373 1073 (freephone)

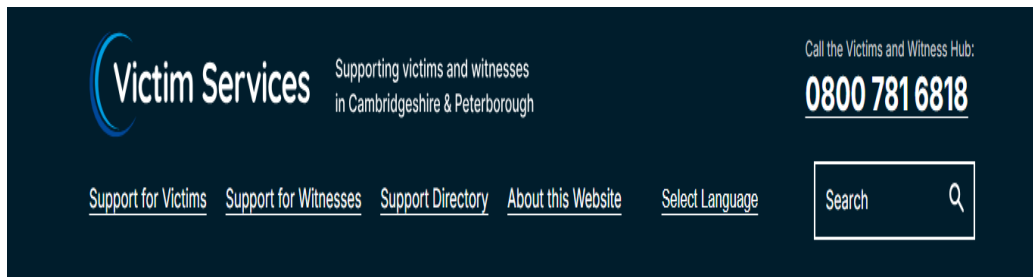
email DASSreferrals@impakt.org.uk

Survivor support and recovery programmes

There are a number of programmes for survivors running across Cambridgeshire and Peterborough, please visit this page on our website Welcome to Cambridgeshire DASV Partnership (cambsdasv.org.uk)

Please note that some programmes accept referrals from professionals only, the referral information is included on the page.

Cambridgeshire Victim and Witness Hub



The Victims and Witness Hub provide emotional and practical support to standard risk domestic abuse victims. Where there is a need for specialist

DV support they will refer, or signpost (depending on the circumstances) to specialist services.

The Hub can be contacted on 0800 781 6818 (8.00am – 7.00pm, Monday to Friday and 9.00am – 5.00pm on Saturdays) or via email victimandwitnesshub@cambs.police.uk.

Further information about the support they can provide, the process for getting support and useful organisations is available on their website.

<https://www.cambsvictimservices.co.uk/support-for-victims>

The Victims and Witness Hub is a free service offered by Cambridgeshire Constabulary which can provide support for anyone affected by crime whether reported or not. The Hub is made up of skilled Victim and Witness Care Coordinators who will discuss your needs and agree a tailored support package with you based on your specific needs and personal circumstances.

This will cover a range of practical and emotional support that you can receive including organising face to face support from a trained Victims' Hub Community Volunteer and help to access other external support organisations.

Independent Domestic Violence Advisory Service (IDVA Service)

If you are felt to be at high risk of harm from domestic abuse, a professional such as a Social Worker or Police can refer your case to the IDVA Service. An IDVA provides short-term, one-to-one support to help keep you, and any children you have, safe.

IDVAs can help with issues around housing, benefits, liaising with police and signposting to legal support. We have IDVAs who speak a range of languages, as well as those who support young people subjected to abuse in their own intimate relationships. We also have IDVAs who work closely with Health agencies and Housing providers.

IDVAs are independent from other agencies such as police and social care, although they can liaise with these agencies at your request. An IDVA will work with you to develop a safety plan which can include safety measures in your home or support with moving to somewhere safer.

You cannot self-refer to the IDVA Service, all referrals have to come from a professional.

The sound of their foosteps on the stairs...

Do you feel safe in your own home?

Call **0300 3731073** to speak to someone

If you are in danger ring **999**

Find out more online at impakt.org.uk/dass



Further Support

- **Domestic Abuse Support Service (DASS)** 0300 3731073
 - **National Abuse Helpline** 0808 2000 247
 - **Cambridge Rape Crisis** 01223 245888 www.caprccp.org.uk
 - **Victim & Witness Hub** 0800 781 6818 <https://www.cambsvictimservices.co.uk/support-for-victims/victims-and-witness-hub>
 - **Cambridgeshire & Peterborough Domestic Violence & Sexual Abuse Partnership** www.cambsdasv.org.uk
 - **National Domestic Violence Helpline** - 0808 2000 247 <http://www.nationaldomesticviolencehelpline.org.uk/>
 - **Men's Advice Line** - 0808 801 0327 www.mensadvice.org.uk
 - **Male Victims of Sexual Violence** Contact 020 3322 1860 <https://www.survivorsuk.org/contact-us/>
 - **Karma Nirvana (victims of honour crimes)** - 0800 5999247 <http://www.karmanirvana.org.uk/>
- Galop (LGBT support)** - 0300 999 5428 <http://www.galop.org.uk/>
- **The Respect Phonenumber** – (domestic violence perpetrators)
(www.respectphonenumber.org.uk 0808 802 4040
 - **Loving Me Domestic Abuse Help Service** Support and advocacy, for 18* Trans and Non-Binary victims of domestic abuse or sexual violence, [vichttps://www.lovingme.uk/](https://www.lovingme.uk/) help@lovingme.uk
 - **Hourglass** provides support for older people who are victims of abuse and exploitation in the UK. [Domestic abuse | Hourglass](https://wearehourglass.org/domestic-abuse) 0800 808 8141/ 07902 478958 <https://wearehourglass.org/domestic-abuse>



This library is a Domestic Abuse Safe Space

**If you need support please speak to a member of staff.
We can provide you with a confidential place to call
support services, or you can use library computers to
access websites and webchat.**

**If you or someone you know is experiencing domestic
abuse or sexual violence, you can get help**

Domestic Abuse Support Service for survivors, of any gender or sexuality,
across Cambridgeshire and Peterborough 0300 373 1073

National Domestic Abuse Helpline: 0808 2000 247 www.nationaldahelpline.org.uk

Men's Advice Line: 0808 801 0327 www.mensadvice.org.uk

LGBT Helpline: 0800 999 5428 www.galop.org.uk

Cambridge Rape Crisis 01223 245888 www.caprcp.org.uk

Peterborough Rape Crisis 01733 852578 www.caprcp.org.uk

In an emergency call 999

For more information visit www.cambsdasv.org.uk



Cambridgeshire & Peterborough Libraries Safe Spaces

All Cambridgeshire and Peterborough libraries offer access to computers so that people can contact domestic abuse support services without their searches being traced.

The following libraries can also provide a private room and telephone to do this:

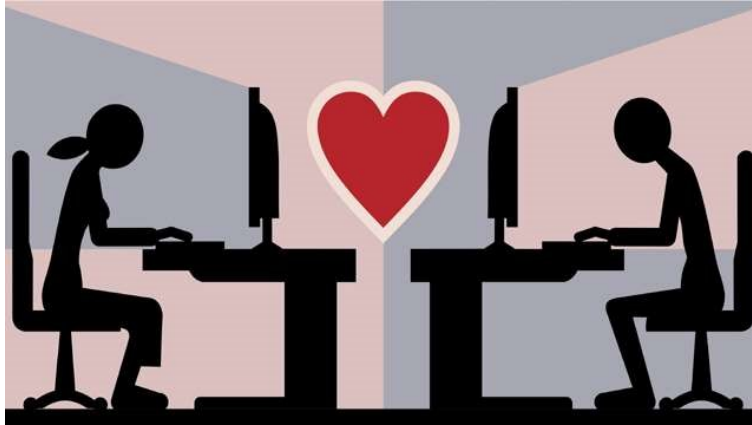
Cambridgeshire Libraries

- Cambridge Central
- Clay Farm
- Ely
- Huntingdon
- March
- St Ives
- St Neots
- Sawston
- Wisbech
- Ramsey

Peterborough Libraries:

- Bretton Library
- Peterborough Central Library
- Dogsthorpe Library
- Hampton Library
- Orton Library
- Werrington Library

Scam in Focus - Romance Scams.



What is a romance scam? It is when someone uses an online dating site to develop a relationship with someone for the express purpose of extracting money from them. How does someone become a victim? The scam is run over a long period of time, forging a relationship, gaining trust, until they feel the victim is sufficiently enamoured with the scammer to send money when it is asked for.

Signs: - A friend or family member may be involved are they exhibiting secretive behaviour, making excuses why they haven't met in person, Sudden and strong attachment to someone they haven't met, and have only just started talking to. These are some of the things to look out for.

Remember, these people are professional relationship builders. They will make you feel special and say all the right things because that is how they gain your trust and build the relationship with you.

How to protect yourself: - Alarm bells should ring If -You like the person and they ask you to chat off the site.

If you attempt to arrange to meet, but they keep making excuses why they can't. They will usually be out of the country for some reason, and it will all sound very plausible. If they ask for money or any personal documentation, then that is a sure sign the person is not on the dating site genuinely.

If you find yourself getting really defensive about questions from loved ones and friends. If they are concerned there is probably a legitimate reason, especially. Conduct a reverse image search on one of the search engines. If the search engine returns an image like the one seen on the dating profile, do a bit more research around the picture. It could be a photograph from a company website

"Why would someone wait this long to scam me". The longer the scam goes on the more you will get attached to the person, the more money you are likely to spend. Remember that the sums sent from a single person have been £30,000. This is a good yearly wage, and this is multiplied by the number of people they are scamming, they can scam several people at the same time

Examples of the type of job they will have: - Remember, they will be working out of the country so they may be on an oil rig, be a doctor working abroad, or they could be in the military. They need to be out of the country as a reason why they can't meet you, and then when they ask for money, for example, they need money for a flight home, or to pay medical fees, or they have lost their credit cards, it will all sound plausible.

Payments: - Credit cards, banks and PayPal all have ways of protecting their customers, and transactions can be reversed. So, you will be asked to send money via ways where the receiver can remain anonymous and the transfer is not reversible. If you haven't heard of their way they are asking you to send money, or it isn't something you have done before, then it is another red flag.

At the end of the day this is a job to these people. So another tell tale sign is they only chat with you their equivalent of 9-5, don't forget they live all over the world in different time zones, so it may look like they are chatting when they get home from work, but in reality they are in a different time zone. English may not be their first language so if they are saying they are from Wales, and their English isn't good, then that is another flag that something may be wrong.

STOP! Take time to think! Could you be a Victim of Romance Fraud?

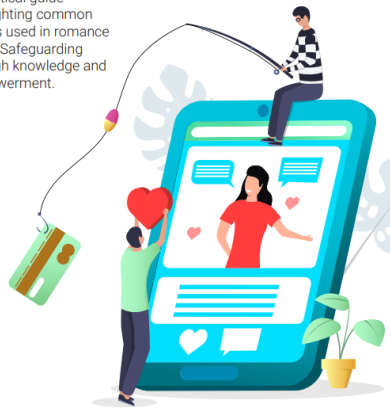
NEW GUIDE
Could you spot
a romance
fraudster?



If you think you've been a victim of a scam, don't feel ashamed or embarrassed - you are not alone. Contact your bank immediately and report it to Action Fraud on 0300 123 2040 or via actionfraud.police.uk.

Staying Safe from **ROMANCE FRAUD**

A practical guide highlighting common tactics used in romance fraud. Safeguarding through knowledge and empowerment.




Follow this link for a free booklet -

[Final-romance-fraud-e-booklet.pdf](#)

<https://crimestoppers-uk.org/getmedia/81014543-5933-4359-a319-b9a6b289ac96/Final-romance-fraud-e-booklet.pdf>



**CAMBRIDGESHIRE
FIRE & RESCUE SERVICE**
Working together to improve community safety

Are you worried about an elderly or vulnerable person's fire safety in the home? 

Cambridgeshire Fire & Rescue Service offer a free Safe and Well Visit to those most at risk in our community.

The Safe and Well visit will provide us with sufficient information to support you and, with your permission, refer you to selected partner agencies, who will be able to support you further. We will not share your data with marketing companies or for other purposes.

Our visit will last no longer than 60 minutes and is completely FREE of charge. Our visit will assess five key elements:

- Fire safety in the home
- Smoking
- Keeping warm in your home
- Falls prevention
- Crime prevention and scams

You are under no obligation to answer any questions that you do not want to, but the more information you provide us with, the better we will be able to support you. We can also provide advice in relation to promoting the health and safety of individuals with hoarding concerns, as well as providing valuable information to care providers.

You can find out if you or a family member or friend are likely to be eligible for a free home fire safety check by calling the automated message line on 0800 917 9994 and leave a message including the persons name, address and daytime phone number to receive a call back.

Visit our website:

<https://www.cambsfire.gov.uk/home-safety/home-fire-safety/>



Creating a safer
Cambridgeshire

Cambridgeshire Community Speedwatch

A Community led initiative to reduce speeding vehicles & make our communities safer.

- The Speedwatch scheme allows the public to get actively involved in monitoring the speed of vehicles travelling through their neighbourhood.
- The countywide scheme is run by Cambridgeshire constabulary and is not an enforcement tool but is about educating motorists and raising awareness of the dangers of speeding.
- Volunteers give as much time as they like – there is no minimum requirement.
- Full training and equipment are provided, and volunteers are insured.



Speedwatch operates across the county and if there is not a scheme in your area it can easily be set up with your help. If you would more information on how to help, make our communities safer please email Speedwatch@cambs.police.uk

Cambridgeshire Constabulary Speedwatch
Volunteer resource

Making our roads safer



**GET CLOSER
AND SUPPORT THE FORCE!**

Call us: 101
Visit us: www.cambs.police.uk
Subscribe: @Cops.org.uk



Cambridgeshire Constabulary

Police are warning motorists of the risks of driving under the influence, figures reveal more than 700 suspected drink or drug drivers have been arrested so far this year.

Motorists are reminded that drink or drug driving could destroy lives.

Officers will be continuing to carry out roadside checks across the county due to the serious consequences of drink driving. Please remember that alcohol takes time to leave your system, and you may still be over the drink drive limit the following morning



“We have a dedicated hotline and all calls are taken in confidence. One call could save a life.”

Calls to the confidential hotline more than doubled last year. There was a total of 98 calls to the hotline in 2023.

The hotline - 0800 032 0845 - is available 24/7. If someone is in immediate danger, always call 999.

BULKY WASTE COLLECTION

COLLECTION & DISPOSAL

5 ITEMS FOR

£30



For more information on
what we can take or how
to book your collection
please contact:
01354 654321 or visit:
fenland.gov.uk/bulkywaste

 Fenland
CAMBRIDGESHIRE
Fenland District Council

We can collect items that are too big for your wheeled bin

Collections do not take place on Bank Holidays. When booking over a bank holiday weekend, if requesting a Tuesday collection, this will be collected on the following Tuesday (not the one directly after a bank holiday weekend).

Tuesday	Benwick, Chatteris, Christchurch, Doddington, Manea, Somersham, Stonea, Tipps End, Welches Dam, Wimblington
Wednesday	Foul Anchor, Four Gotes, Gorefield, Guyhirn, Leverington, Tydd Gote, Tydd St Giles, Walsoken, Wisbech, Wisbech St Mary
Thursday	Coates, Eastrea, Murrow, Newton, Parson Drove, Pondersbridge, Ramsey Mereside, Rings End, Tholomas Drove, Thorney Toll, Throckenholt, Turves, Whittlesey
Friday	Coldham, Elm, Friday Bridge, March, Three Holes, Waldersey

Please leave your item/s out by 7am on your collection day (and no earlier than the night before). This can be where you usually put your bins.

Make sure your items are accessible. Our collection crew cannot enter properties, garages or sheds. We only collect items that you have paid for, so please don't add extra rubbish. If an item is too heavy we may be unable to remove it.

Fenland District Council is a registered waste carrier, which means you can be sure that your waste is being disposed of safely and legally. You can view our Waste Carrier Registration on the [Environment Agency website](https://www.gov.uk/government/organisations/environment-agency). <https://www.gov.uk/government/organisations/environment-agency>

Other options—You could donate your items to a charity or social enterprise. Furniture, Working 'white goods' (e.g. fridges or washing machines), Electrical items, Soft furnishings (with the original fire retardant label attached)

You can also take your item/s to a Household Recycling Centre. This is free for household waste.

<https://www.cambridgeshire.gov.uk/residents/waste-and-recycling/household-recycling-centres>

USEFUL INFORMATION



Creating a safer
Cambridgeshire

Phone the police on **101** for non-urgent crime or **999** for an emergency. Or use the quick online reporting tools to report a wide range of crime, anti-social behaviour, and vehicle offences,.

<https://www.cambs.police.uk/report>



<https://crimestoppers-uk.org/>



<https://www.fenland.gov.uk/report>



<https://www.cambsvictimservices.co.uk/>



Report Hate Crime

<https://www.met.police.uk/true-vision-report-hate-crime/>

ActionFraud

National Fraud & Cyber Crime Reporting Centre

☒☒☒ 0300 123 2040 ☒☒☒

<https://twitter.com/actionfrauduk>



**Cambridgeshire
& Peterborough**
Domestic Abuse & Sexual
Violence Partnership

<https://www.cambsdasv.org.uk/website>